

15.-17. DUBNA 2026 | TŘINEC

XXXV.

WORKSHOP ČESKÉ ASOCIACE
INTERVENČNÍ KARDIOLOGIE



15. 4. 2026 CAIR Třinec

1. operatér MUDr. Martin Sluka PhD. FN Olomouc
2. operatér MUDr. Martin Tropp NPO Třinec
ARO a tým sester NPO

Prezentace pacienta: MUDr. Michal Hnidka



Muž

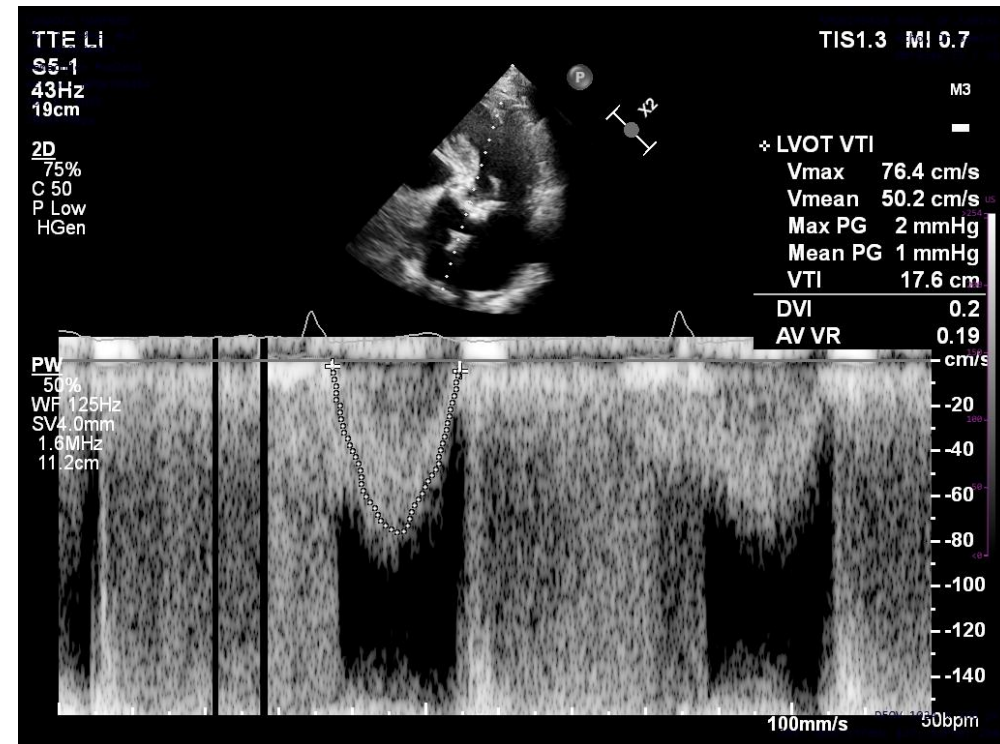
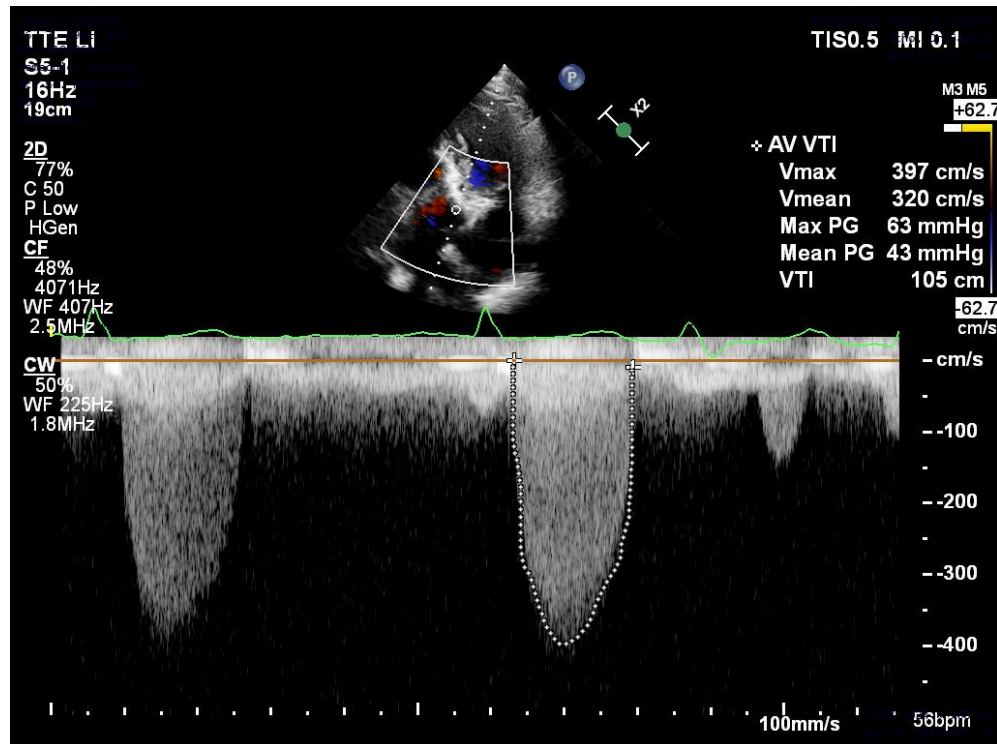
84 let

Euroskore II 4,8%

**Významná aortální stenóza (BAV), NYHA II st
NT pro BNP 2000...2500ng/l**

Stp RT pro Ca prostaty – remise, dyslipidémie

TTE + TEE



TEELI

X8-2t
15Hz
18cm

2D
69%
C 50
P Off
Res

CF
48%
6887Hz
WF 619Hz
4.4MHz



PAT T: 37.0C
TEE T: 40.1C



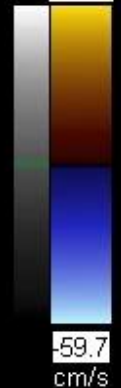
TIS0.7

MI 0.3

0

M4 M5

+59.7



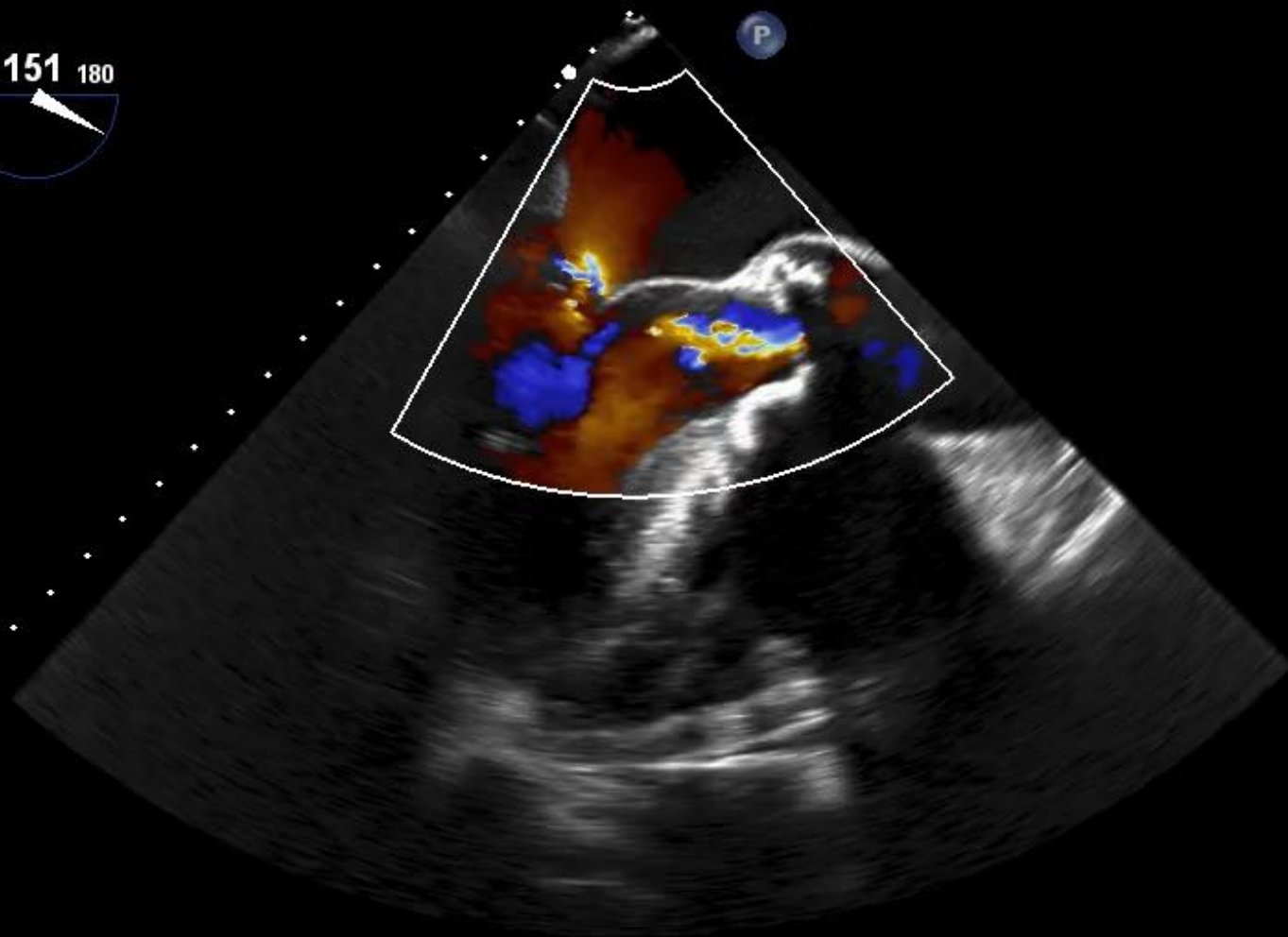
5

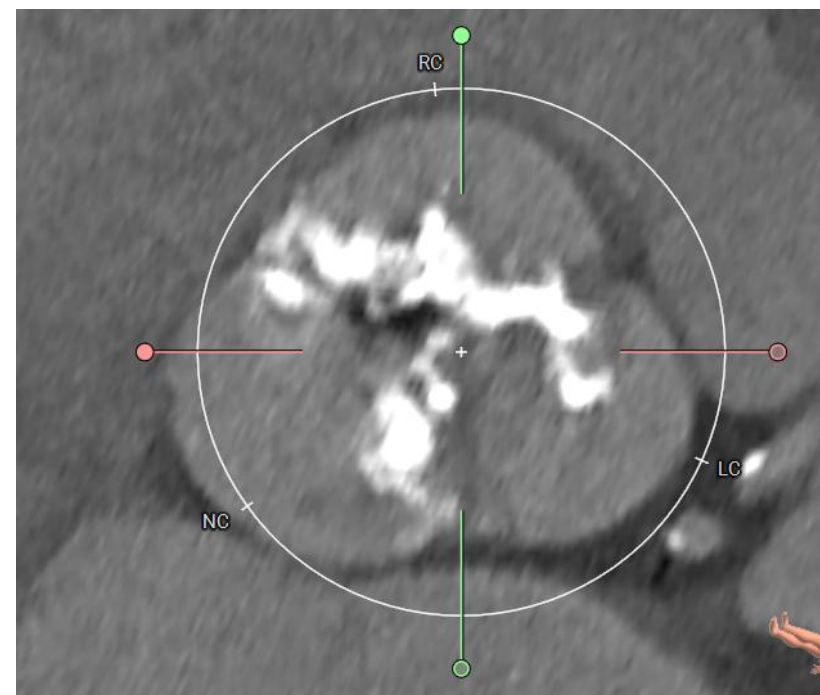
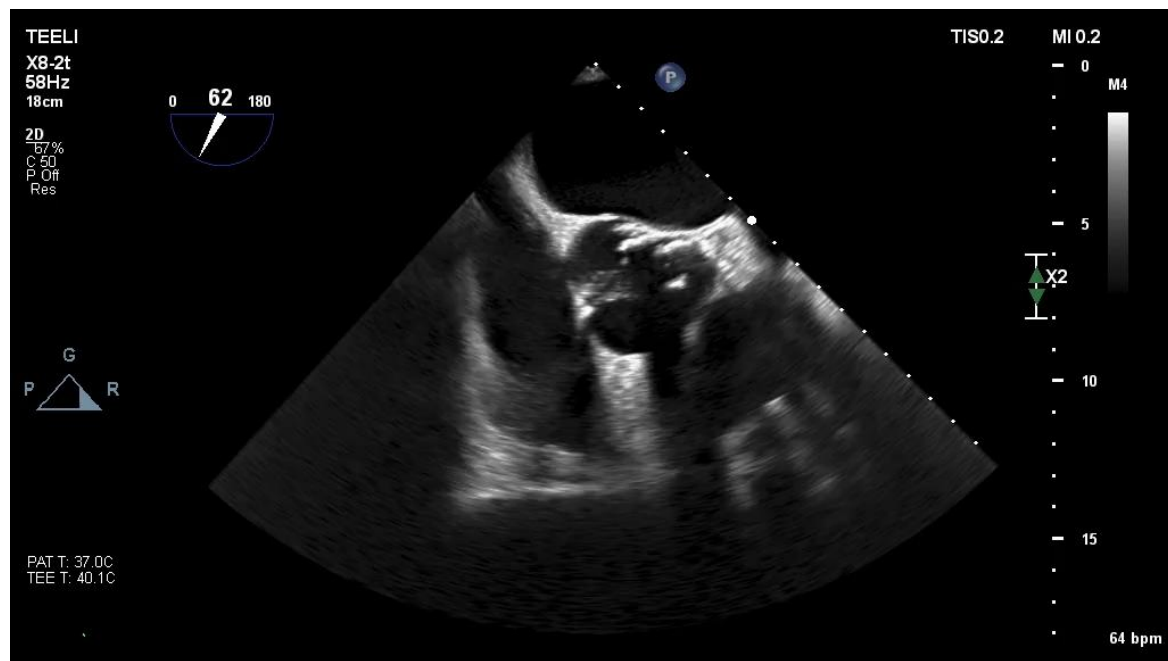


10

15

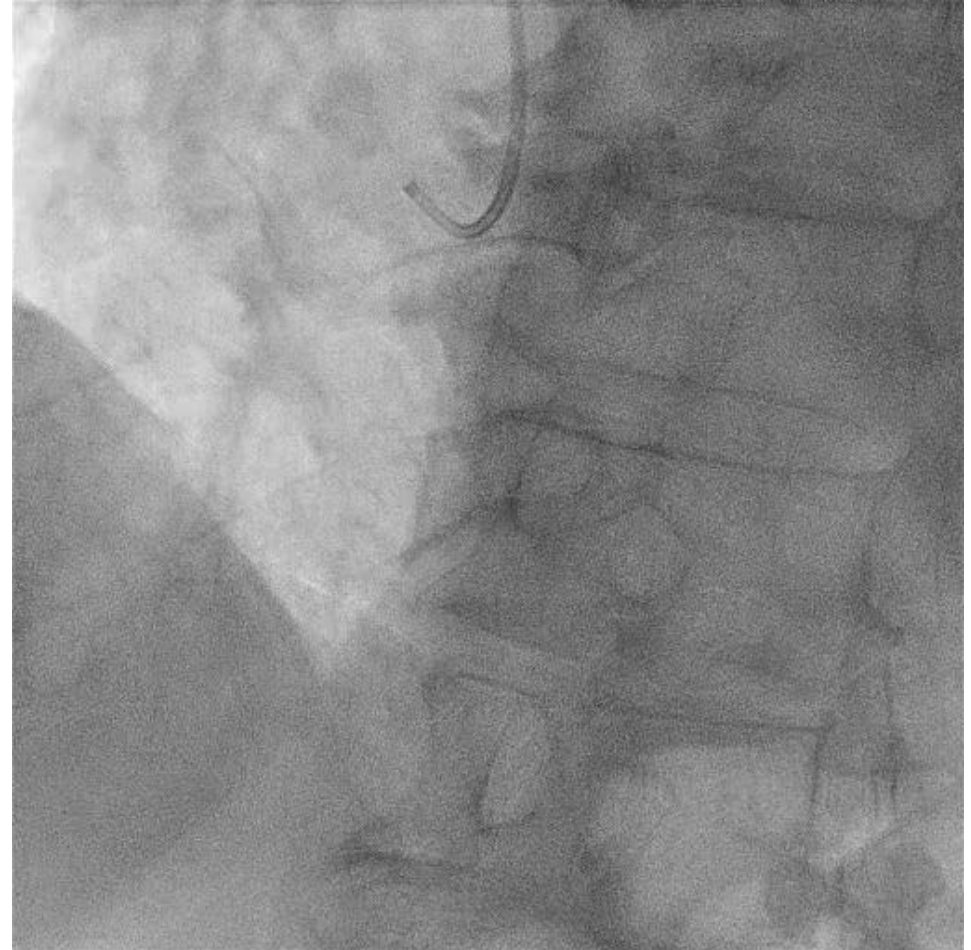
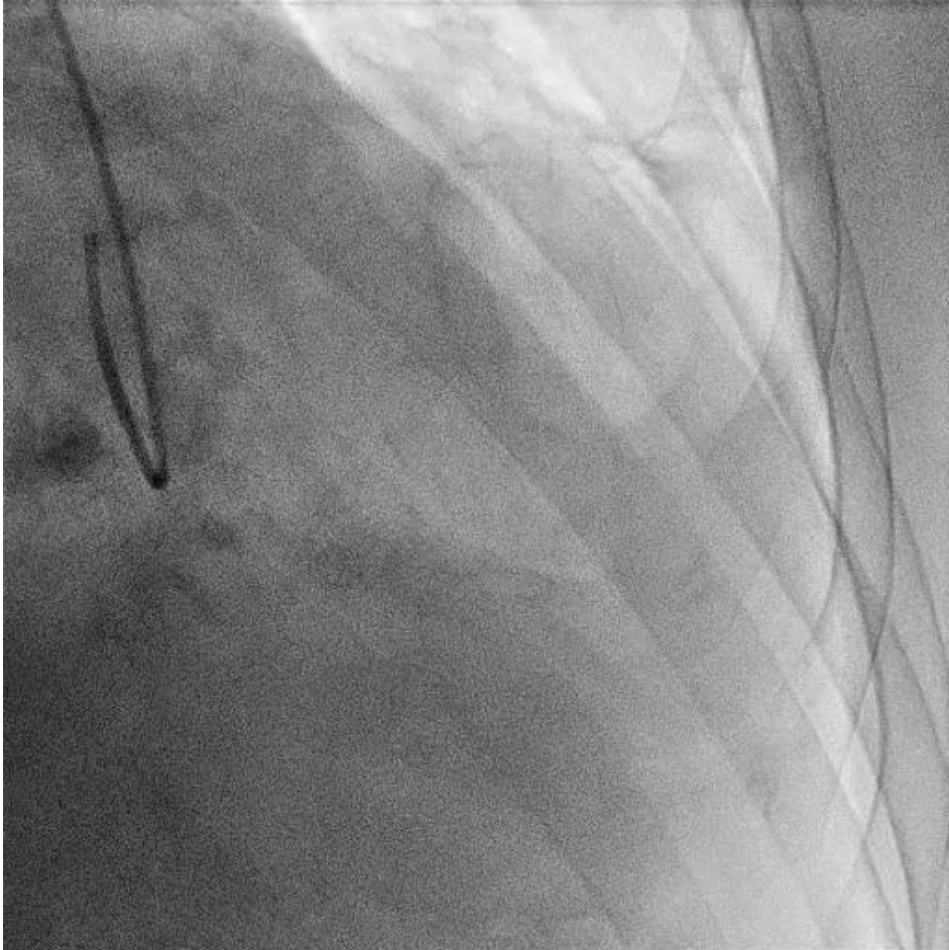
88 bpm





Bikuspidní aortální chlopeň

SKG



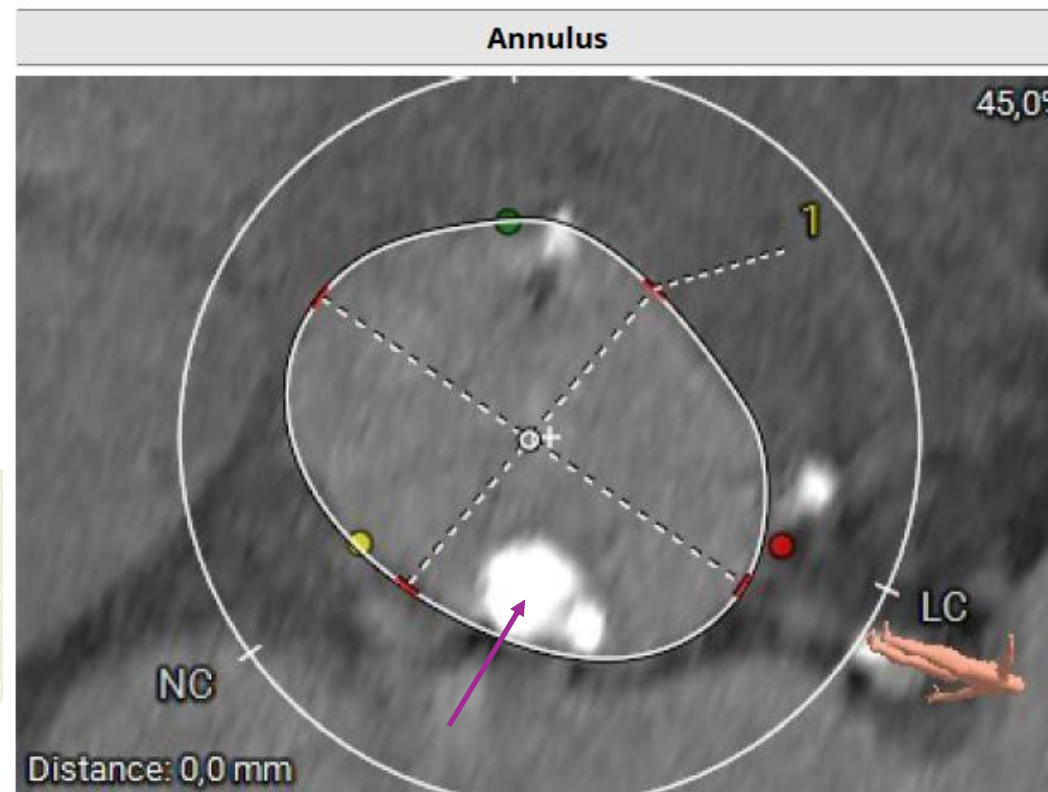
CT - annulus

annulus 714mm²

Myval 30.5 mm	min 2 ml	29,5	-4,3%
	min 1 ml	30,0	-1,0%
	nominal	30,5	2,3%
	plus 1 ml	31,0	5,7%
	plus 2 ml	31,5	9,1%

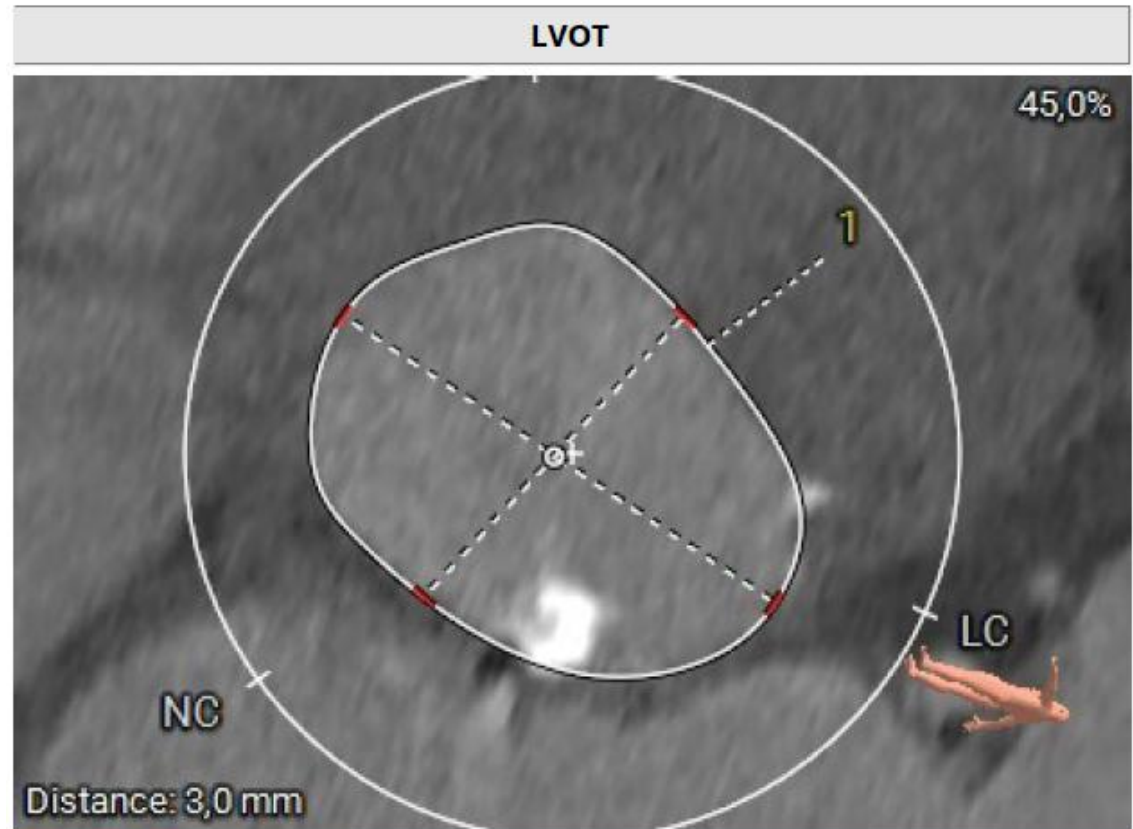
2 měření annulus 695mm²

Myval 30.5 mm	min 2 ml	29,5	-0,9%
	min 1 ml	30,0	2,4%
	nominal	30,5	5,9%
	plus 1 ml	31,0	9,4%
	plus 2 ml	31,5	12,9%



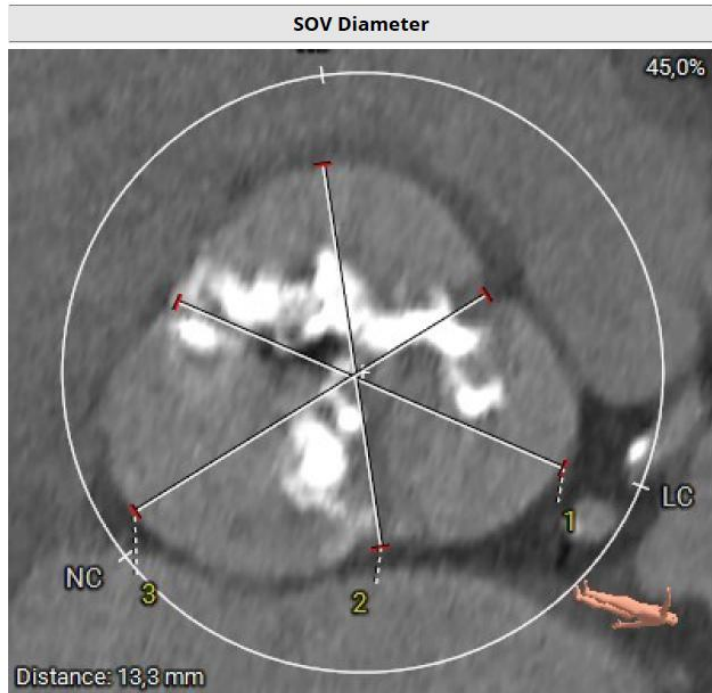
ID Type	Label	Value
1	Polygon Annulus Dimensions - Min. Ø	26,1 mm
	Annulus Dimensions - Max. Ø	34,5 mm
	Annulus Dimensions - Avg. Ø	30,3 mm
	Annulus Dimensions - Area derived Ø	30,2 mm
	Annulus Dimensions - Perimeter derived Ø	30,7 mm
	Annulus Dimensions - Area	714,1 mm ²
	Annulus Dimensions - Perimeter	96,3 mm

CT LVOT



ID Type	Label	Value
1	Polygon LVOT Diameter - Min. Ø	24,6 mm
	LVOT Diameter - Max. Ø	33,4 mm
	LVOT Diameter - Avg. Ø	29,0 mm
	Area derived Ø	29,1 mm
	Perimeter derived Ø	29,8 mm
	Area	666,6 mm ²
	Perimeter	93,5 mm

CT – SOV, STJ, ASC Ao



ID	Type	Label	Value
1	Diameter	Sinus of Valsalva Left	44,0 mm
2	Diameter	Sinus of Valsalva Right	40,7 mm
3	Diameter	Sinus of Valsalva Non	43,3 mm



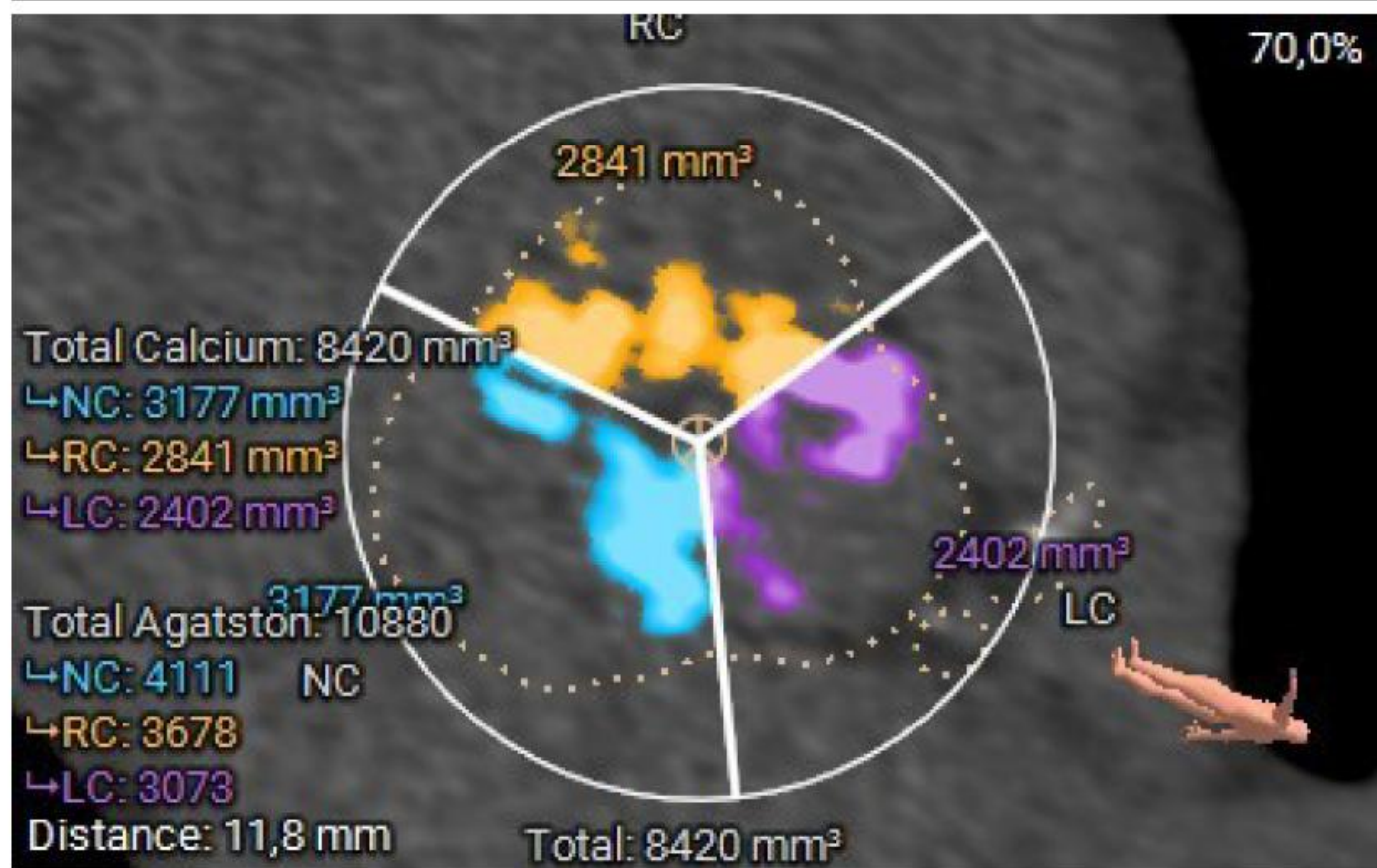
ID	Type	Label	Value
1	Diameter (Min/Max)	Sinotubular Junction Diameter - Min. Ø	36,0 mm
		Sinotubular Junction Diameter - Max. Ø	37,1 mm
		Sinotubular Junction Diameter - Avg. Ø	36,5 mm



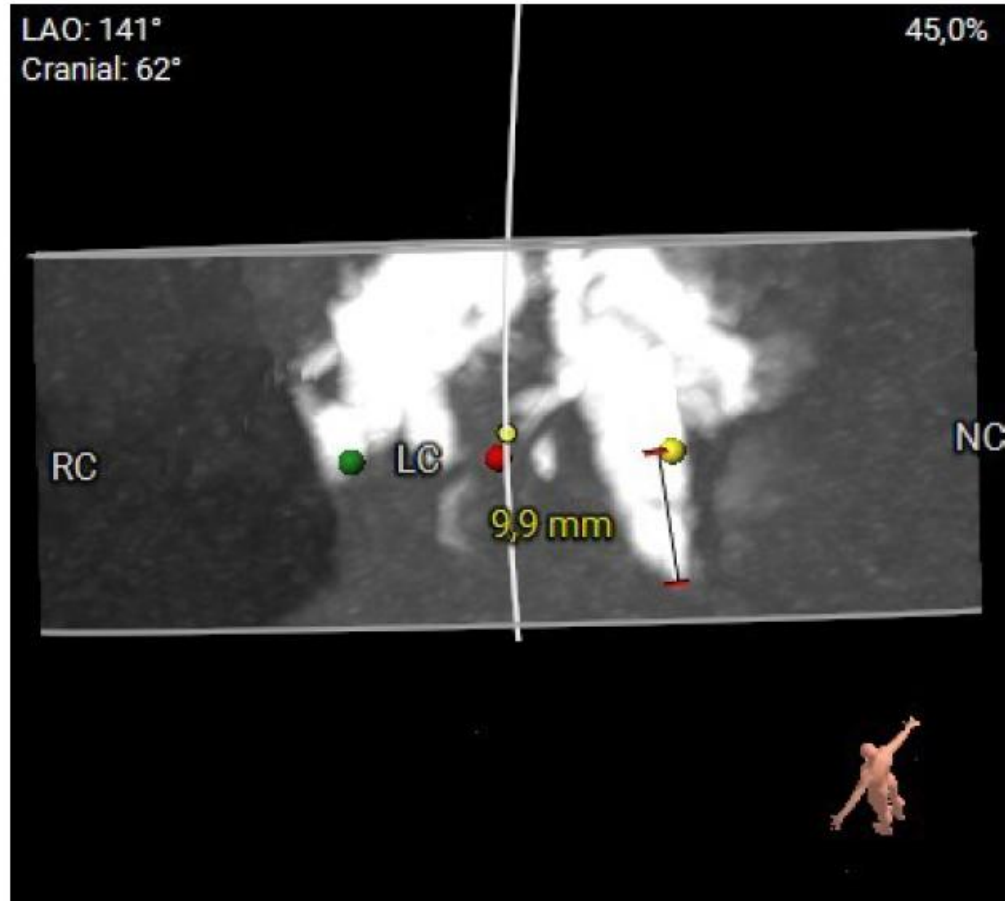
ID	Type	Label	Value
1	Diameter (Min/Max)	Ascending Aorta Diameter - Min. Ø	37,3 mm
		Ascending Aorta Diameter - Max. Ø	38,5 mm
		Ascending Aorta Diameter - Avg. Ø	37,9 mm

Agatson 10880

CAC 11000



Hockey Puck (MIP)



Ileofemorální aa. – točitý průběh víc vpravo



Strategie

Přístup – **AFC vlevo – Python 14F hydrofilní expandabilní sheath**

AFC vpravo - reference

AR vpravo - Sentinel

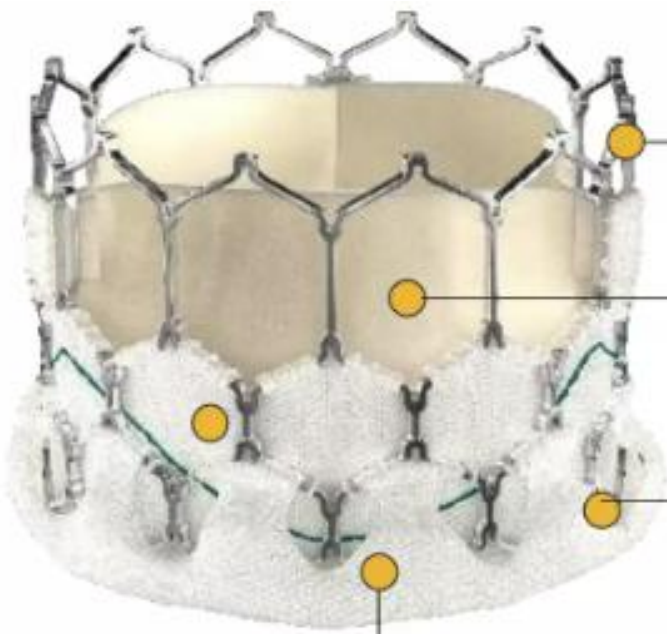
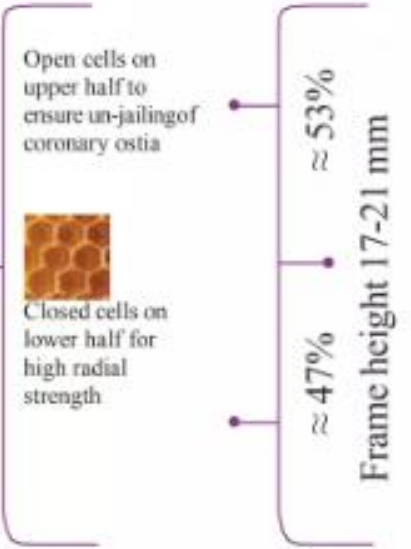
Predilatace BK 25mm pro lepší zavádění

Implantace **MYVAL 30,5mm**

Uzávěr: **Prostyle 1x + AngioSeal**



Hybrid Honeycomb Cell Design Concept



Cobalt alloy frame for high radial strength & radiopacity

AntiCa³ treated bovine pericardium tri-leaflet valve

External PET skirting to plug microchannels & further reduce PVL

Internal PET sealing cuff for minimizing PVL & puncture resistance

Ø – 20 mm, 21.5 mm, 23 mm, 24.5 mm, 26 mm, 27.5 mm, 29 mm Ø – 30.5 mm , 32 mm XL Sizes