

# Přínos a možnosti zobrazovacích metod u infekční endokarditidy

## CT a MR



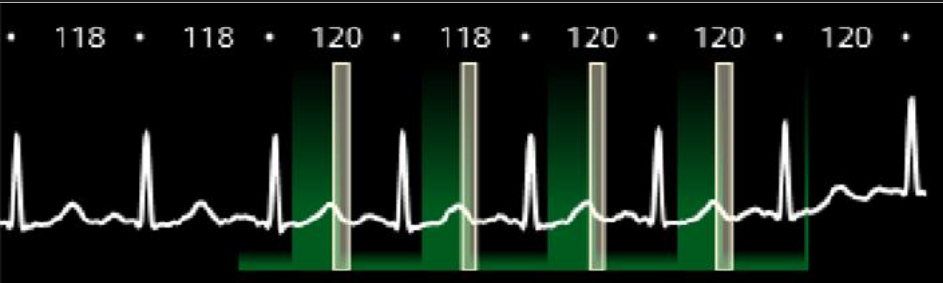
Jan Baxa

Klinika zobrazovacích metod, FN Plzeň a LF UK v Plzni

# zobrazování chlopní



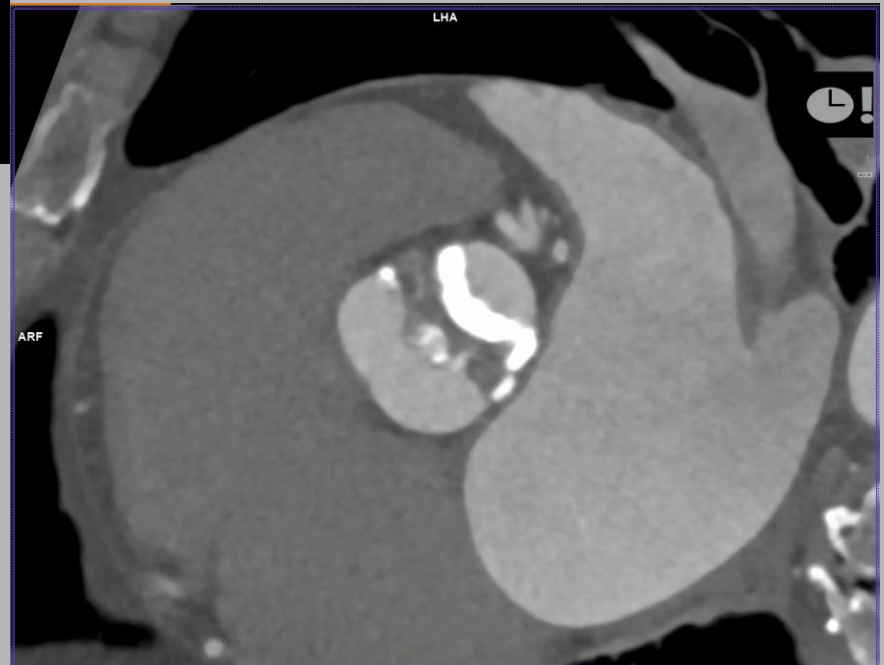
# technika



retrospektivní gating

všechny fáze R-R intervalu

vyšší radiační zátěž





**ESC**

European Society  
of Cardiology

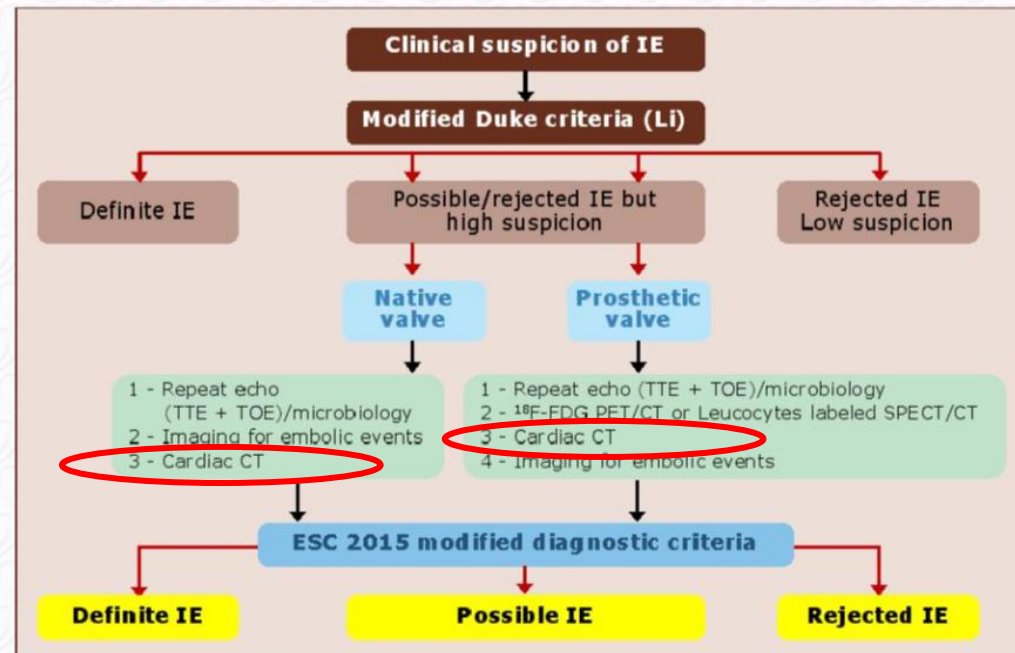
# doporučení 2015

## The « Endoca

### • Characteristics of

1. Immediate access to diagnostic procedures: multislice CT, MRI, and nuclear imaging

## ESC 2015 algorithm for diagnosis of IE





**ESC**

European Society  
of Cardiology

# doporučení 2015

## 2. Imaging positive for IE

### a. Echocardiogram positive for IE:

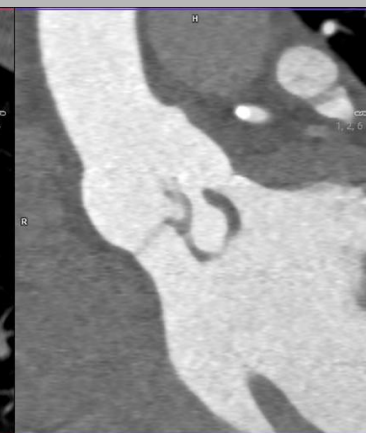
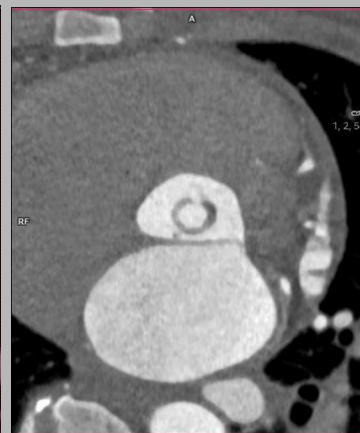
- Vegetation
- Abscess, pseudoaneurysm, intracardiac fistula
- Valvular perforation or aneurysm
- New partial dehiscence of prosthetic valve

### b. Abnormal activity around the site of prosthetic valve implantation detected by $^{18}\text{F}$ -FDG PET/CT (only if the prosthesis was implanted for >3 months) or radiolabelled leukocytes SPECT/CT.

### c. Definite paravalvular lesions by cardiac CT.

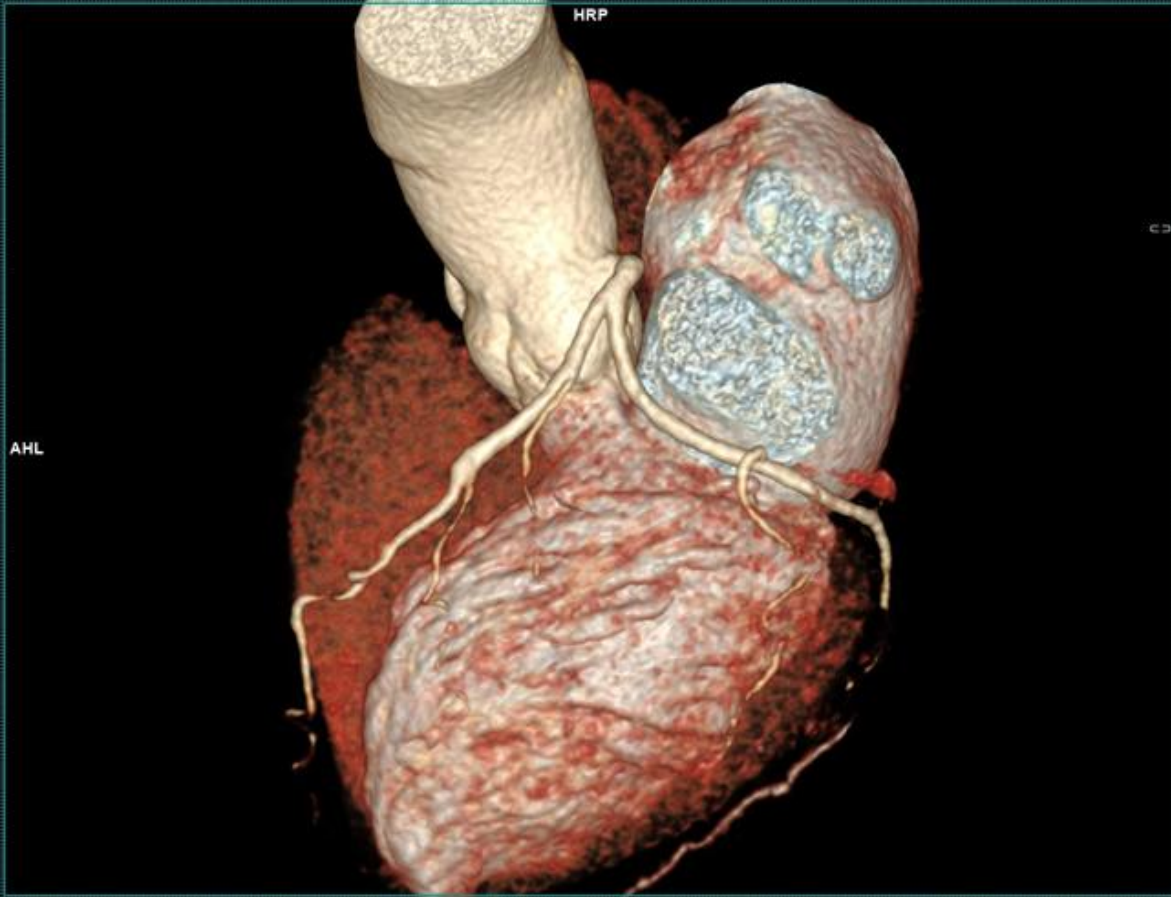


# vegetace

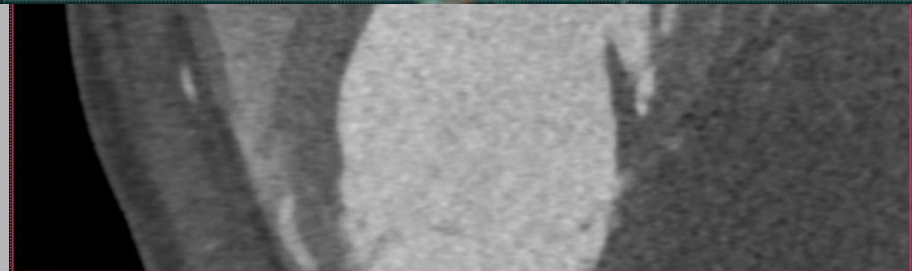
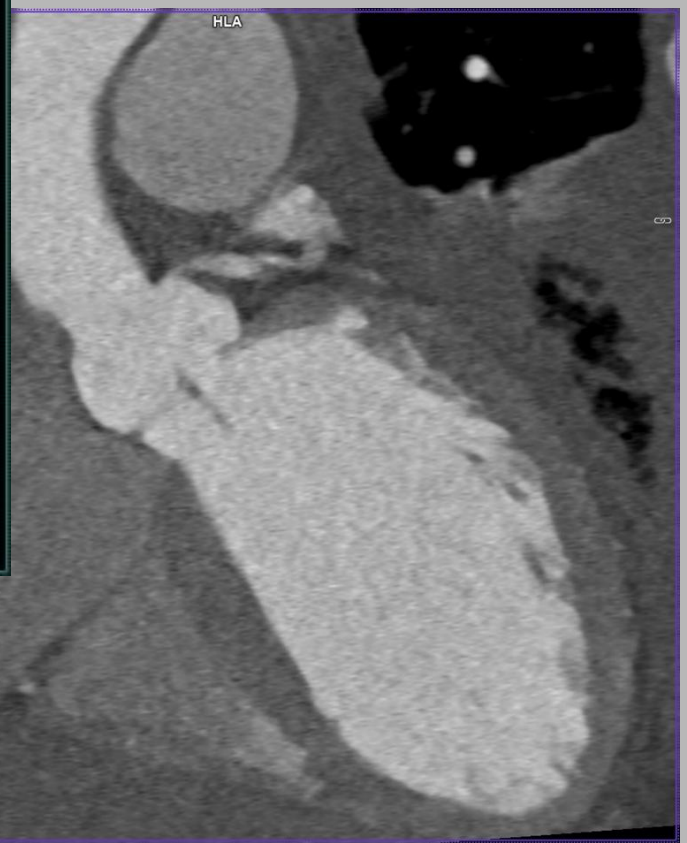


# vegetace



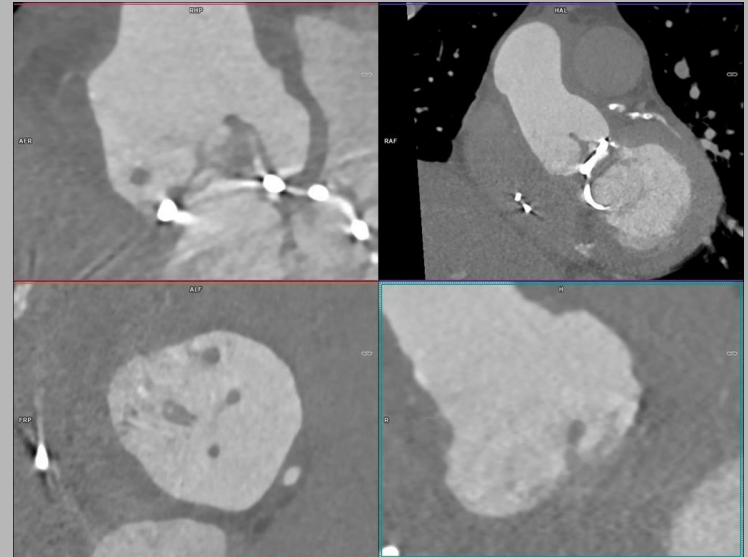


vegetace

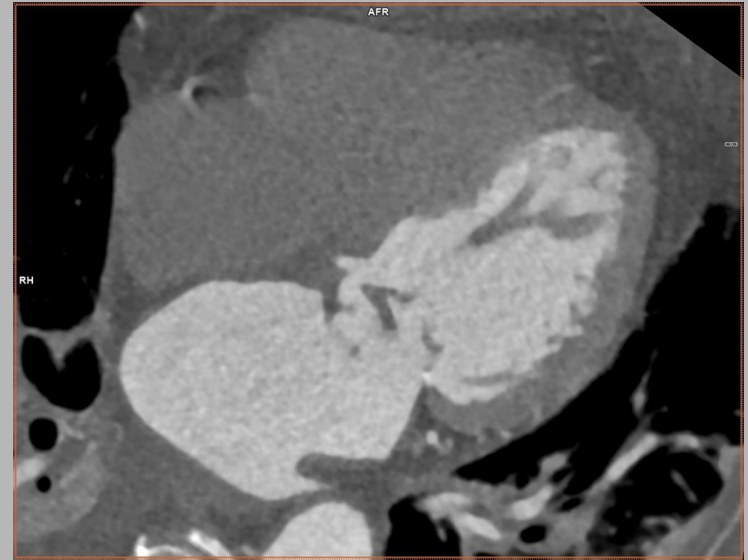
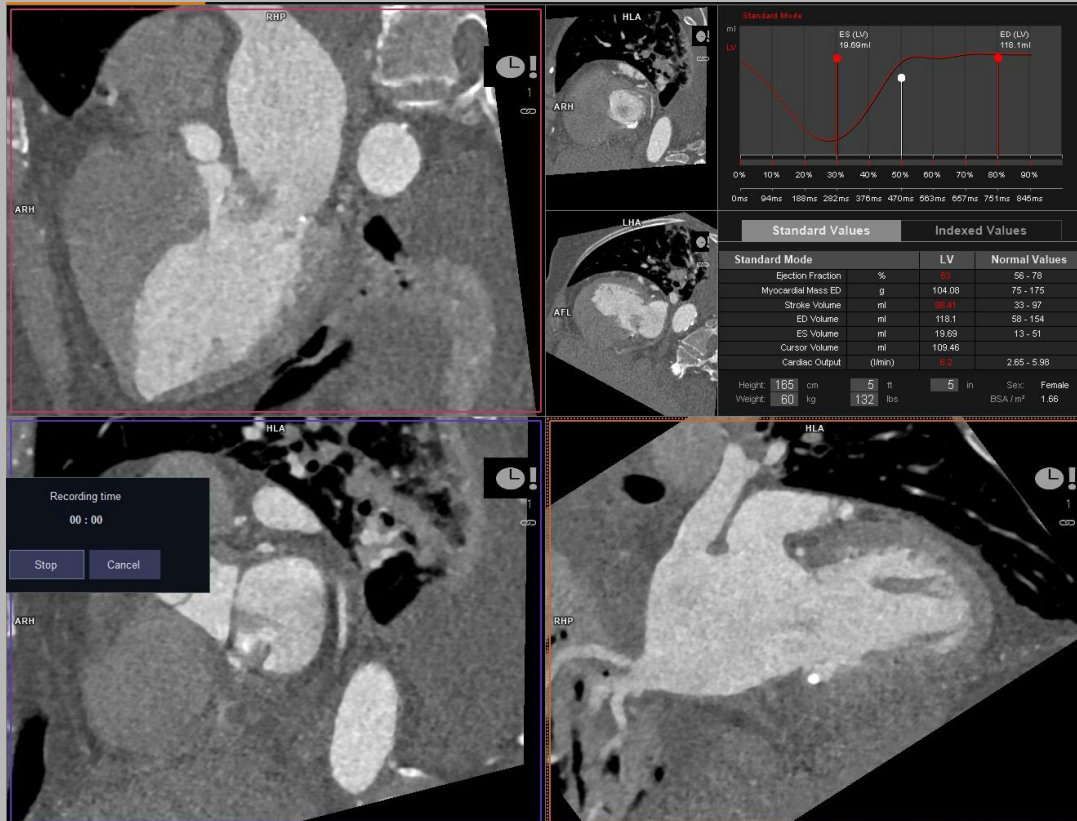




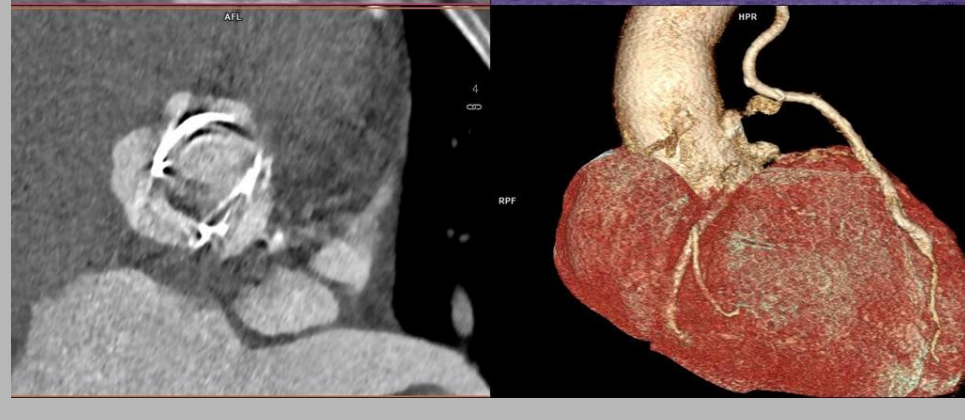
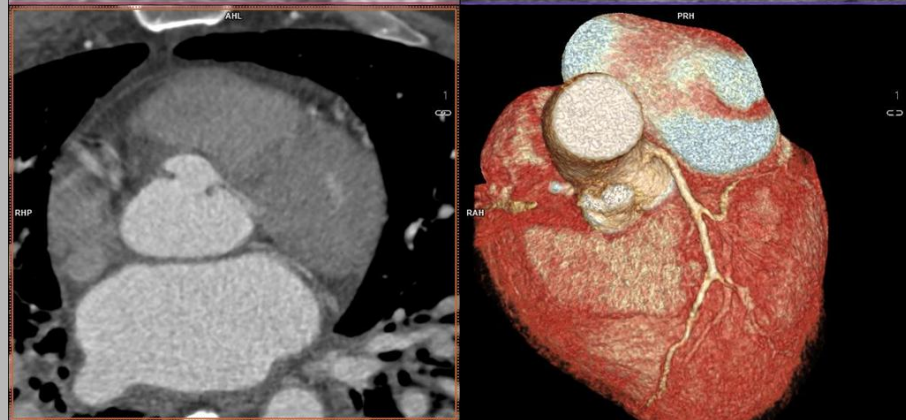
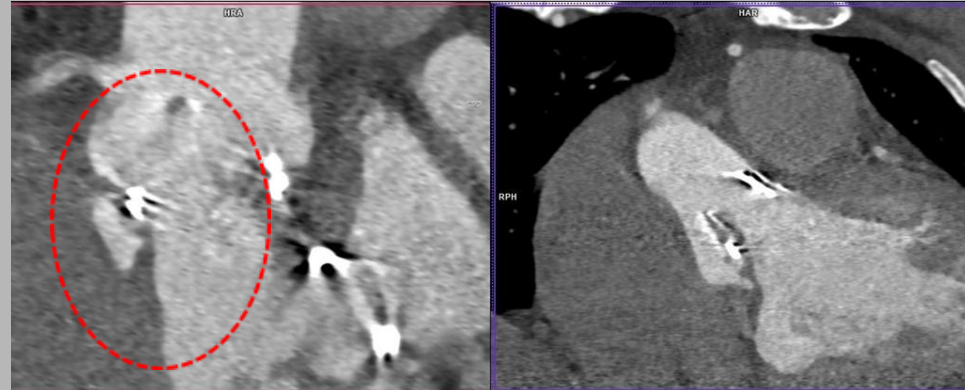
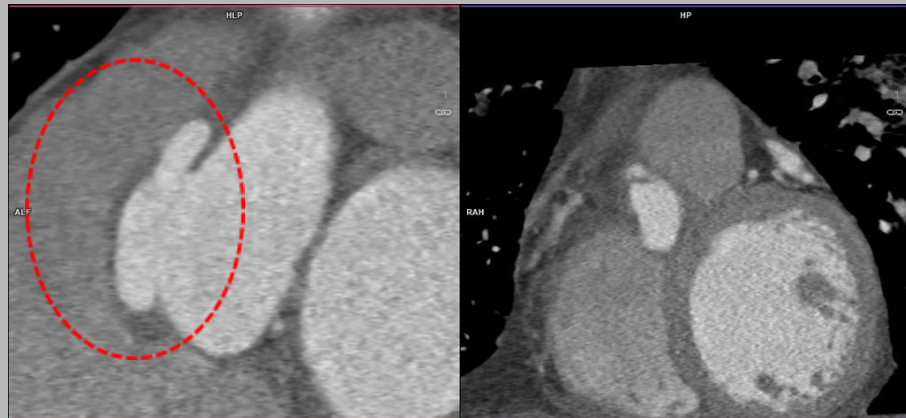
# náhrady



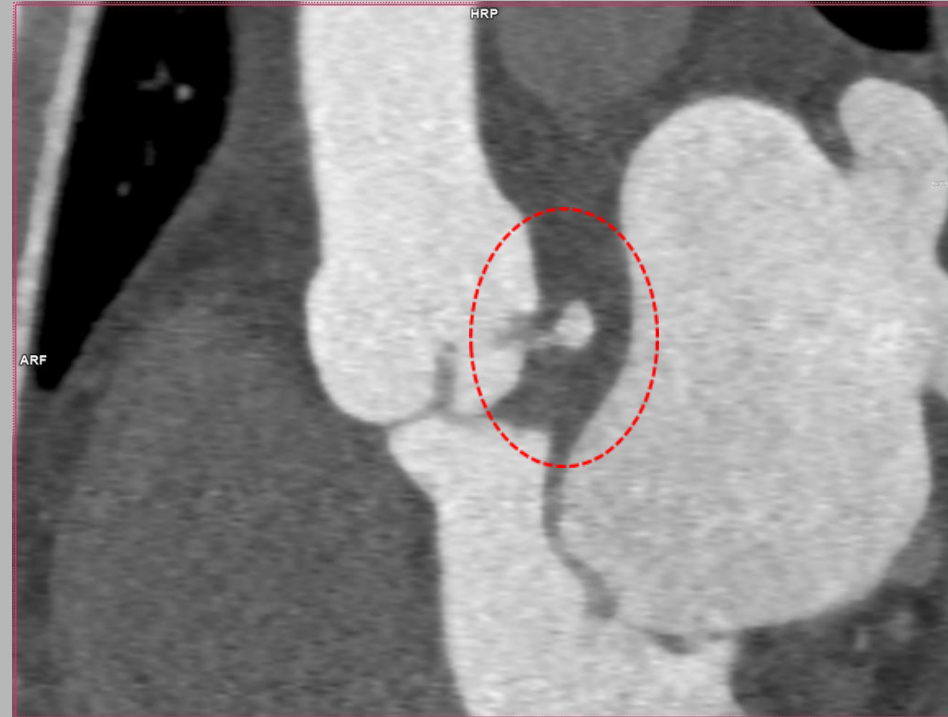
# vegetace



# absces

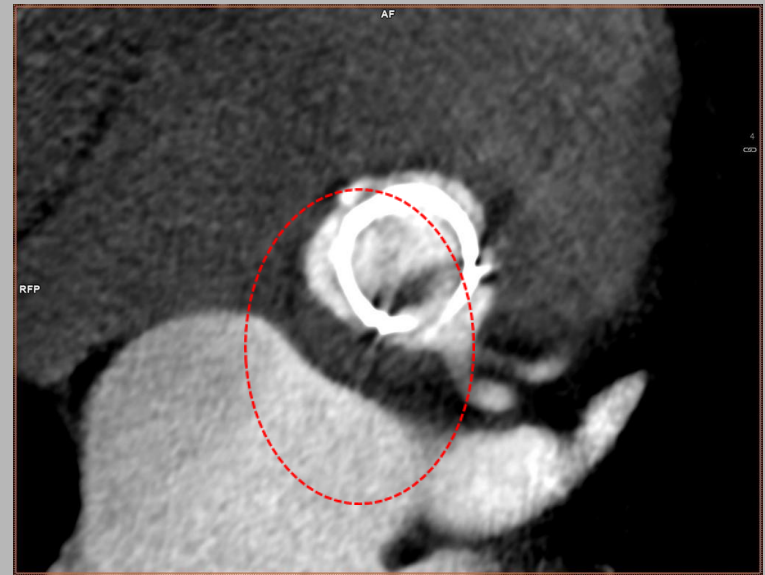


# absces



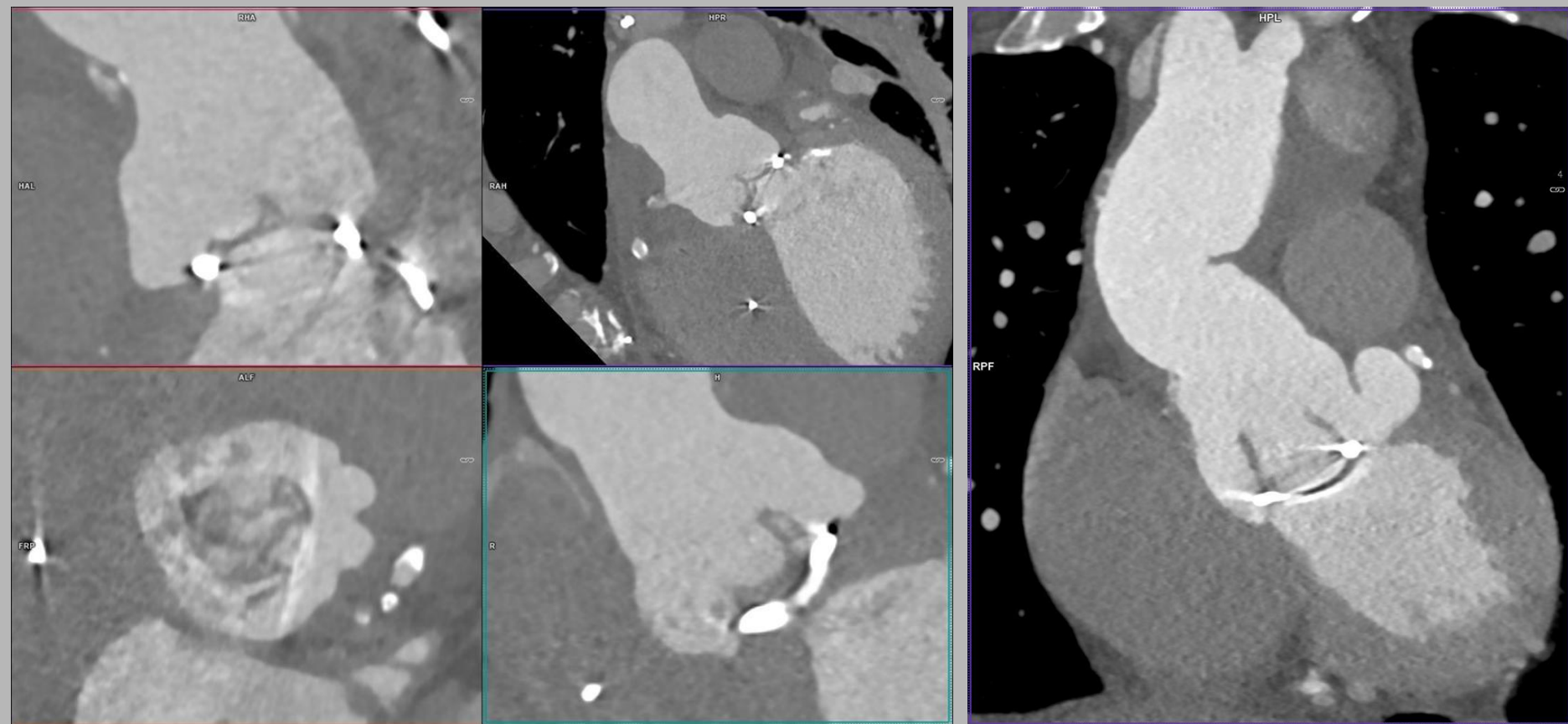


# periaortální prostor





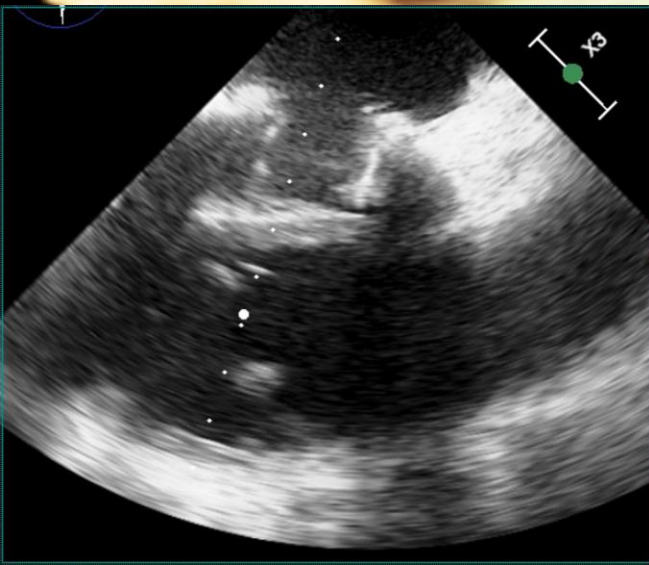
# absces vs. dehiscence



# paravalvulární komunikace



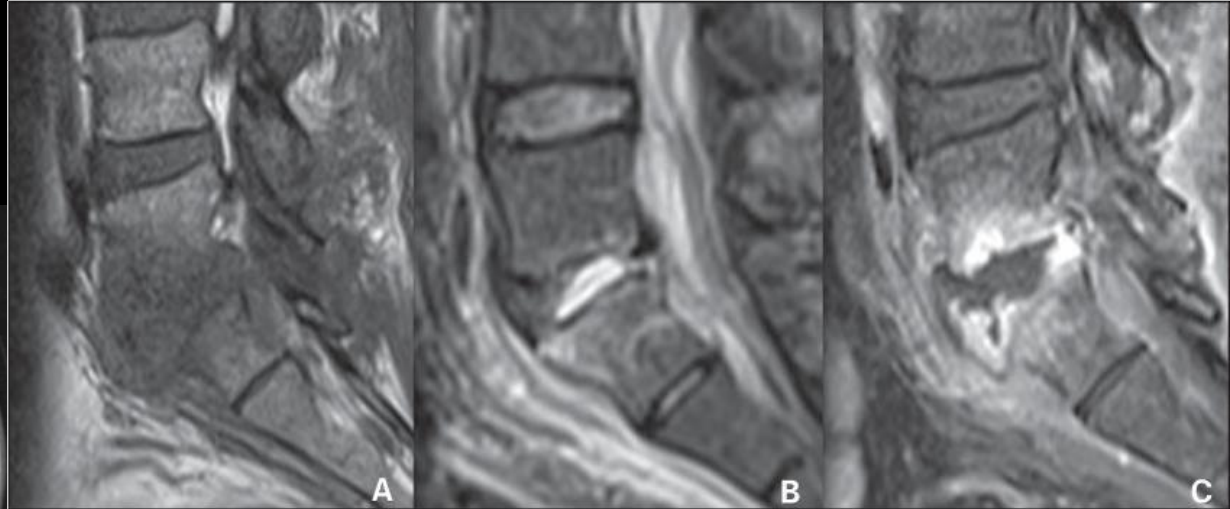
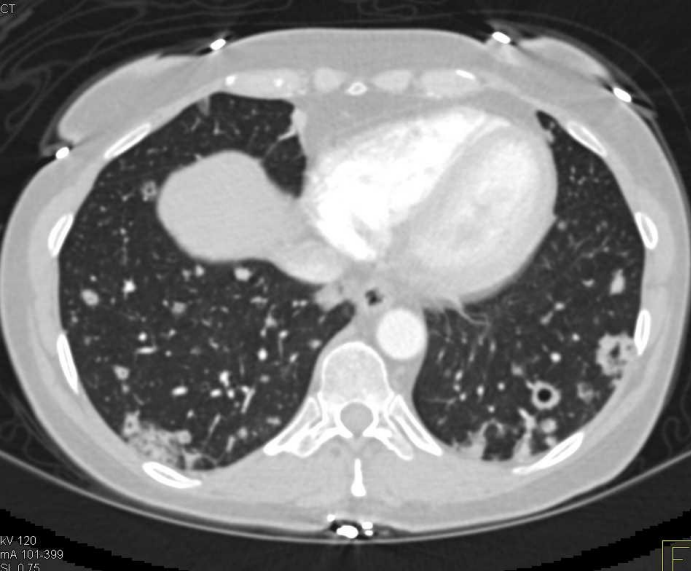
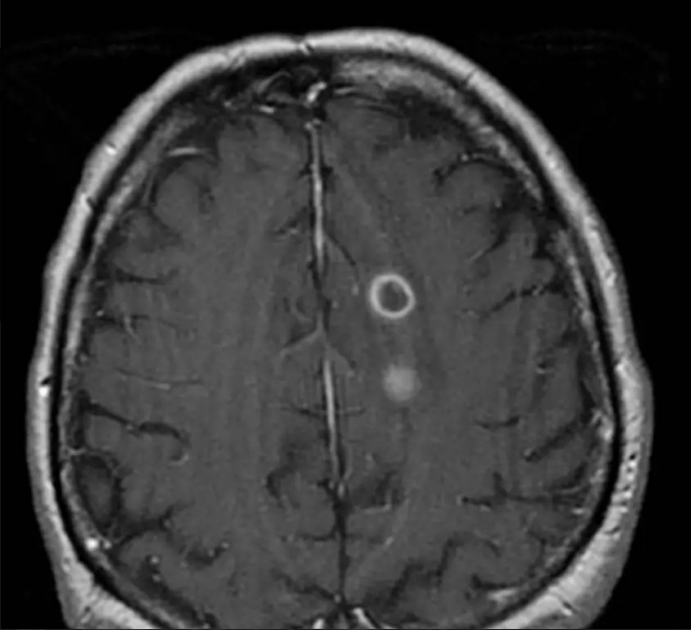
# elektroda







# komplikace





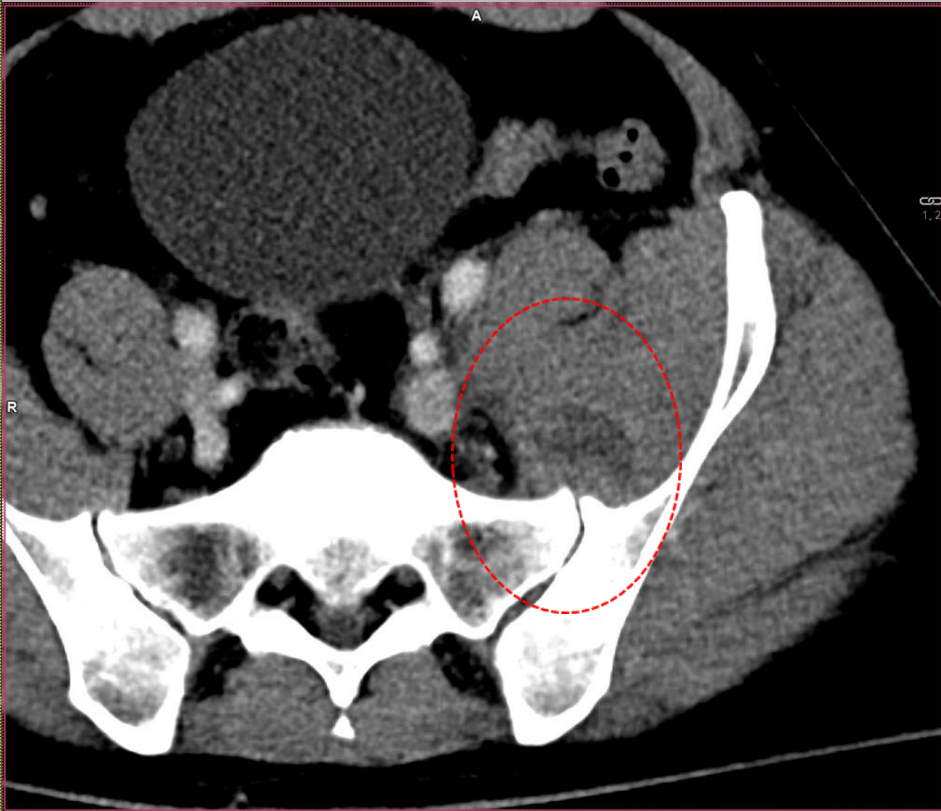
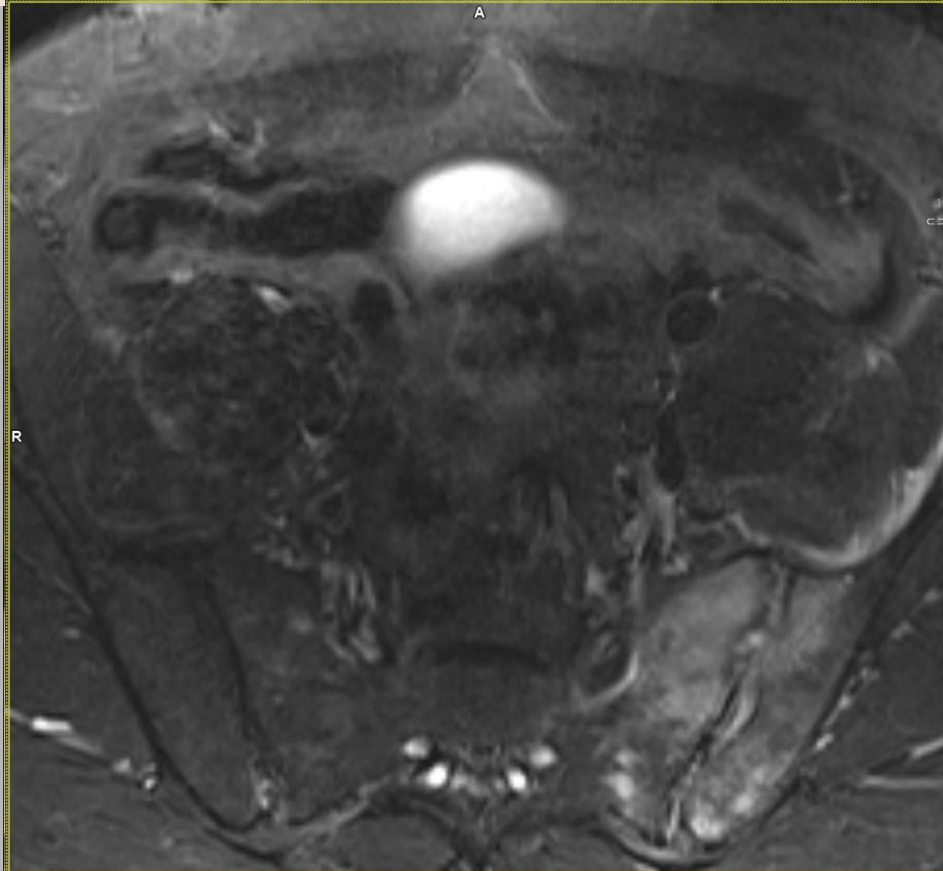
**Native valve**

**Prosthetic valve**

- 1 - Repeat echo (TTE + TOE)/microbiology
- 2 - Imaging for embolic events
- 3 - Cardiac CT

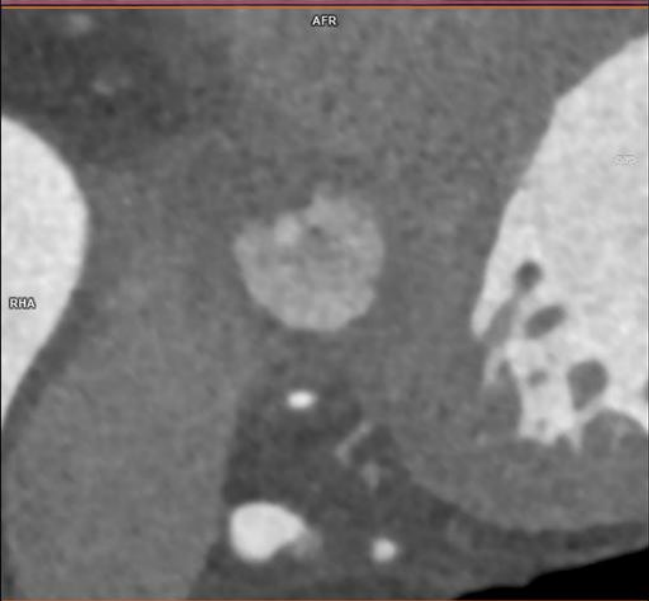
- 1 - Repeat echo (TTE + TOE)/microbiology
- 2 -  $^{18}\text{F}$ -FDG PET/CT or Leucocytes labeled SPECT/CT
- 3 - Cardiac CT
- 4 - Imaging for embolic events

# komplikace





náhradě aortální  
e / septický stav /  
echo bez nálezu



# kdy indikovat CT?

přínos CT vyšetření u IE

perivalvulární prostor / absces / PSA  
náhrady a elektrody  
koronární tepny  
celotělové CT

CT vs. PET/CT

cílené CT srdce jako první  
dostupnost PET/CT

MR

komplikace

