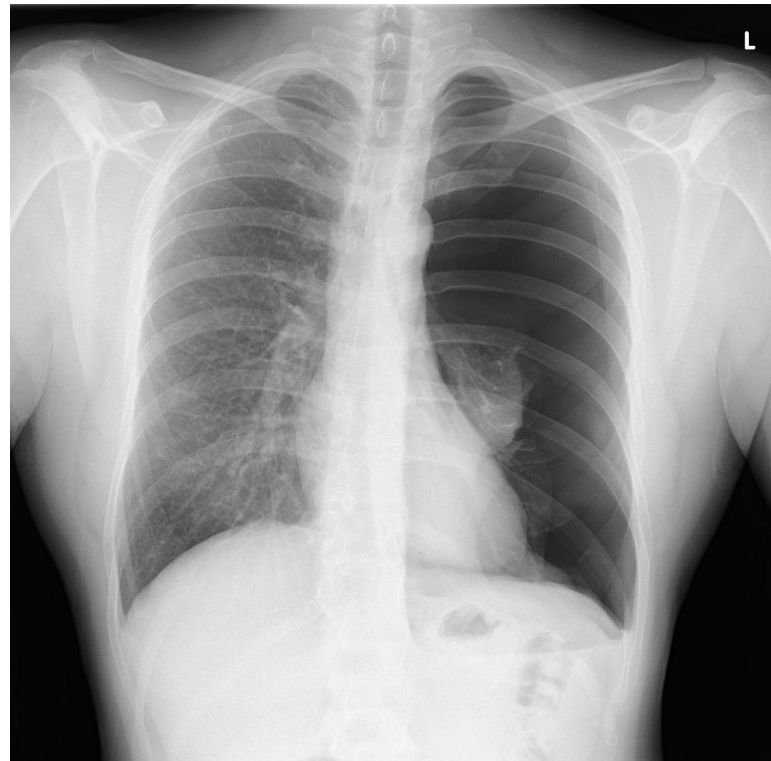


# Hrudní drenáž

Radim Špaček



# Acute Cardiovascular Care Association

## ACCA CERTIFICATION PROGRAMME – LEVEL 2 CERTIFICATION – LOGBOOK TABLE OF COMPETENCIES

Echocardiography		
Endotracheal Intubation	Able to perform independently in routine cases	Level II
Mechanical Ventilation	Able to perform independently in routine cases	Level II
Primary Angioplasty	Some practical experience (50)	Level II
Advanced Extracorporeal Support	Some practical experience (5)	Level II
Thoracic Ultrasound	Some practical experience (20)	Level II
<b>Chest Tube Insertion</b>	Some practical experience (10)	Level II

# S čím se na jednotkách kardio-intenzivní péče setkáváme

- **Pneumothorax**
  - Iatrogenní
  - Spontánní
- **Hemothorax**
  - Iatrogenní
  - Po KPCR
- **Empyém**

BTS guidelines

## Introduction and methods: British Thoracic Society pleural disease guideline 2010

Ingrid Du Rand,<sup>1</sup> Nick Maskell<sup>2</sup>

### CLINICAL CONTEXT

Pleural disease remains common, affecting over 3000 people per million population each year. They therefore represent a significant contribution to the workload of respiratory physicians. Pleural disease originates from a wide range of pathologies and a systematic approach to the investigation and management is therefore required. These guidelines attempt to summarise the available evidence to aid the healthcare professional in delivering good quality patient care.

### METHODOLOGY

#### Establishment of guideline team

A Working Party was established with representation from a range of professionals with an interest in pleural disease together with a lay representative (see full list of Guideline Group members at the end of this section).

#### Scope of the guideline, PICOT questions and literature search

[https://thorax.bmj.com/content/65/Suppl\\_2](https://thorax.bmj.com/content/65/Suppl_2)

# Pneumothorax – jak na to ...

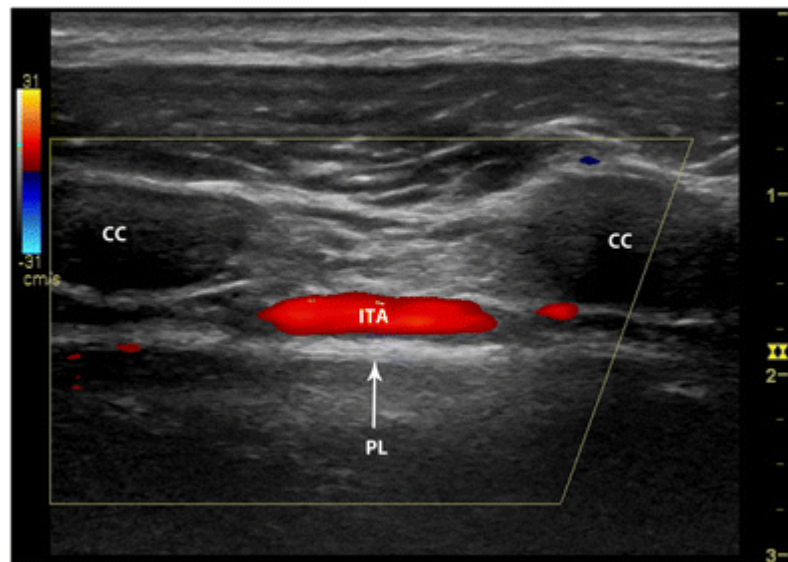
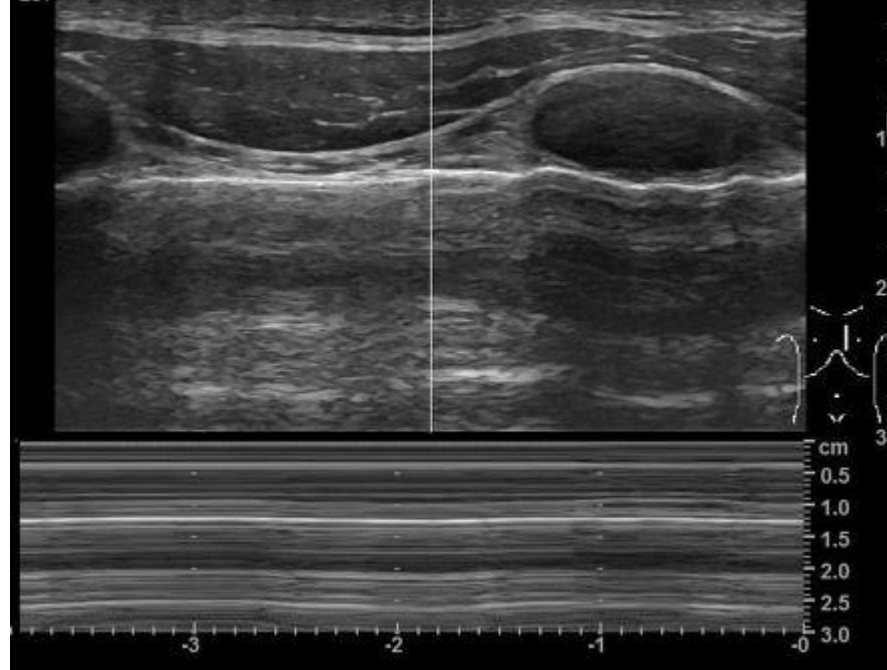
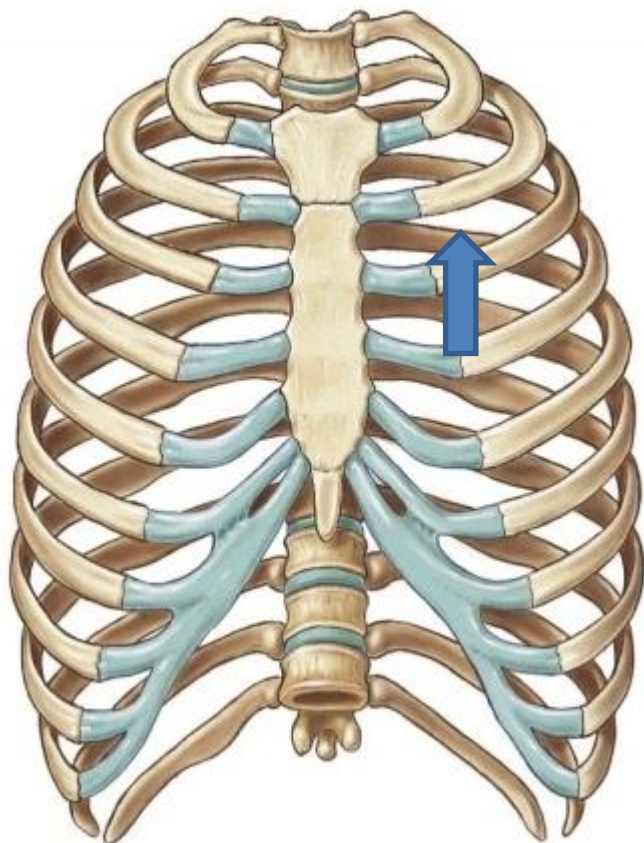
- Používat „small-bore caliber“ drény (8-12F)
- Drenážní otvory vždy zavést apikálně/ventrálně
- Při malém leaku napojit Heimlichovu chlopeň



# PNO – výběr drénu



# Výběr místa zavedení

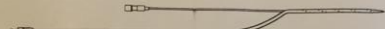


**COOK MEDICAL**  
**Pneumothorax Set**

REF C-TPT-200

REF G03302

1/24



10.2Fr / 29cm



STERILE EO

2024-01-24



Rx only

LOT 14586061

2022-04-04



cookmedical.com

**COOK**

REF C-TPT-200



REF G03302

Cook Incorporated  
750 Daniels Way  
Bloomington, IN 47404 USA  
MADE IN USA

**COOK**  
MEDICAL

EC REP

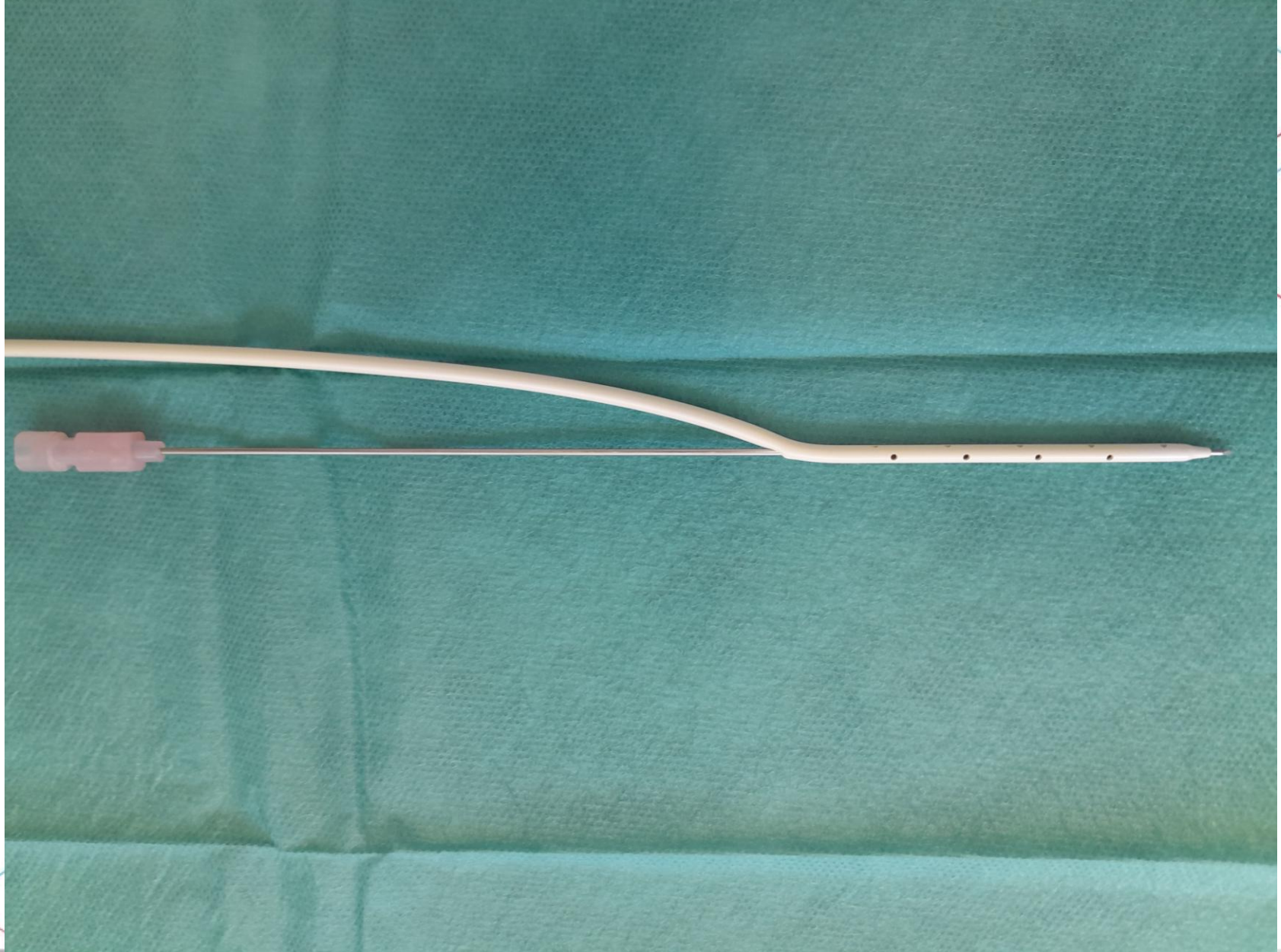
Cook Medical Europe Ltd.  
O'Halloran Road,  
National Technology Park,  
Limerick, IRELAND

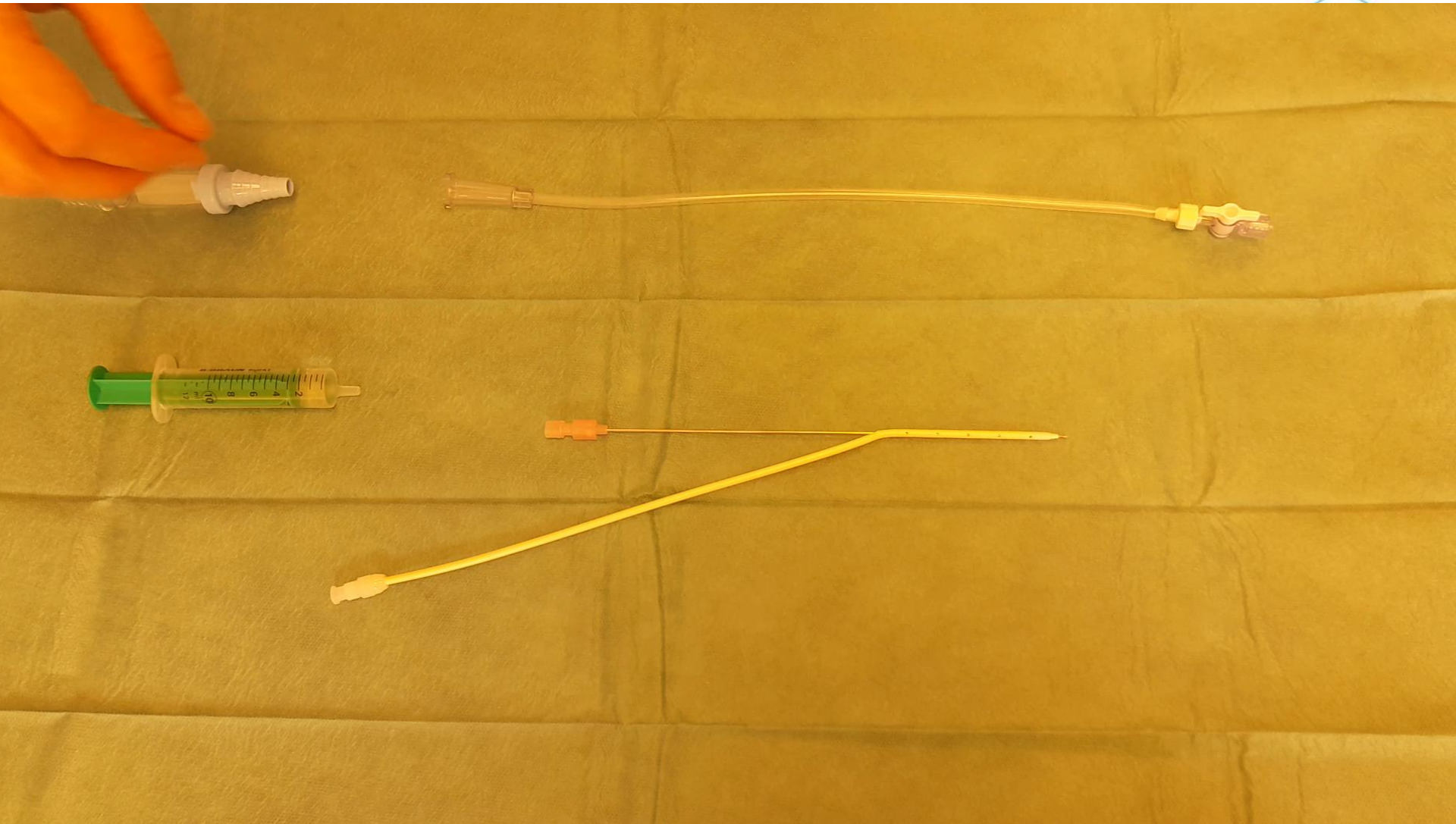
CE  
0123

Used for the evacuator  
Cook Chest 1  
Latex

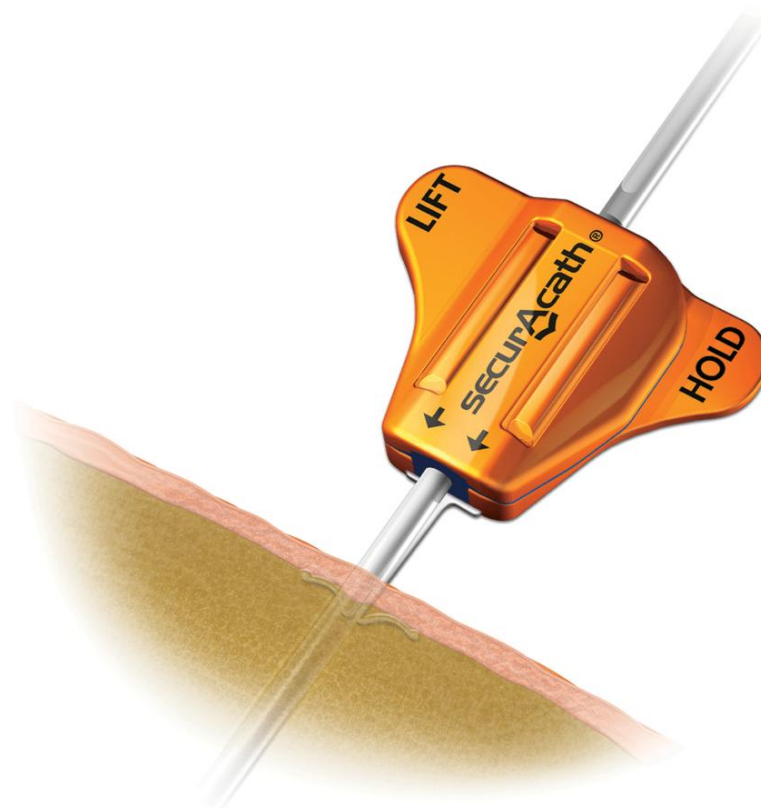


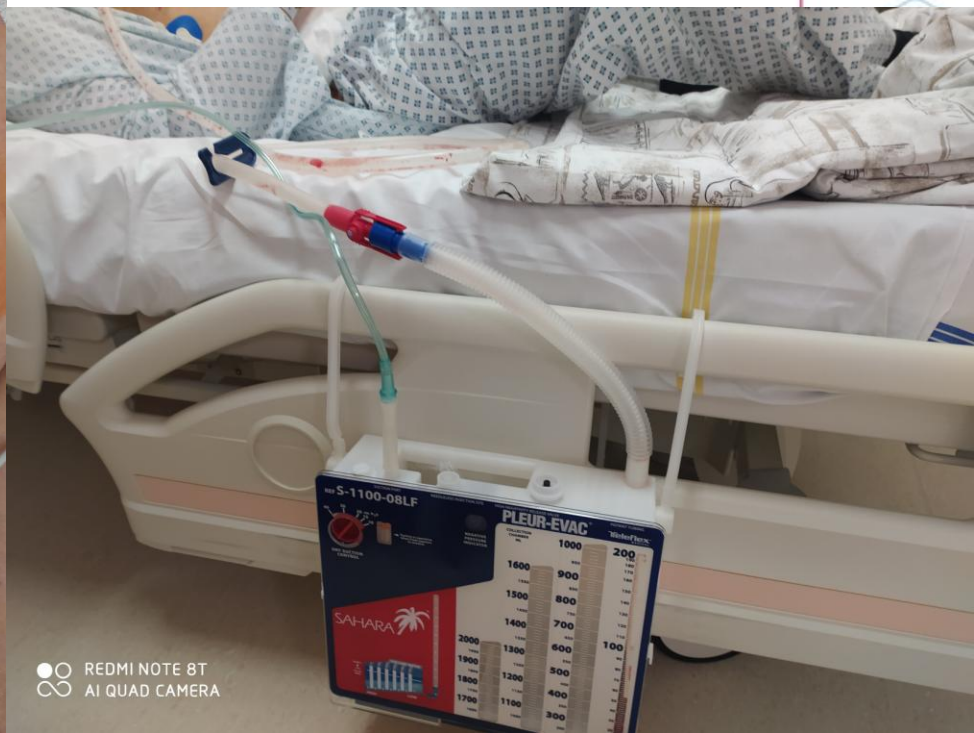




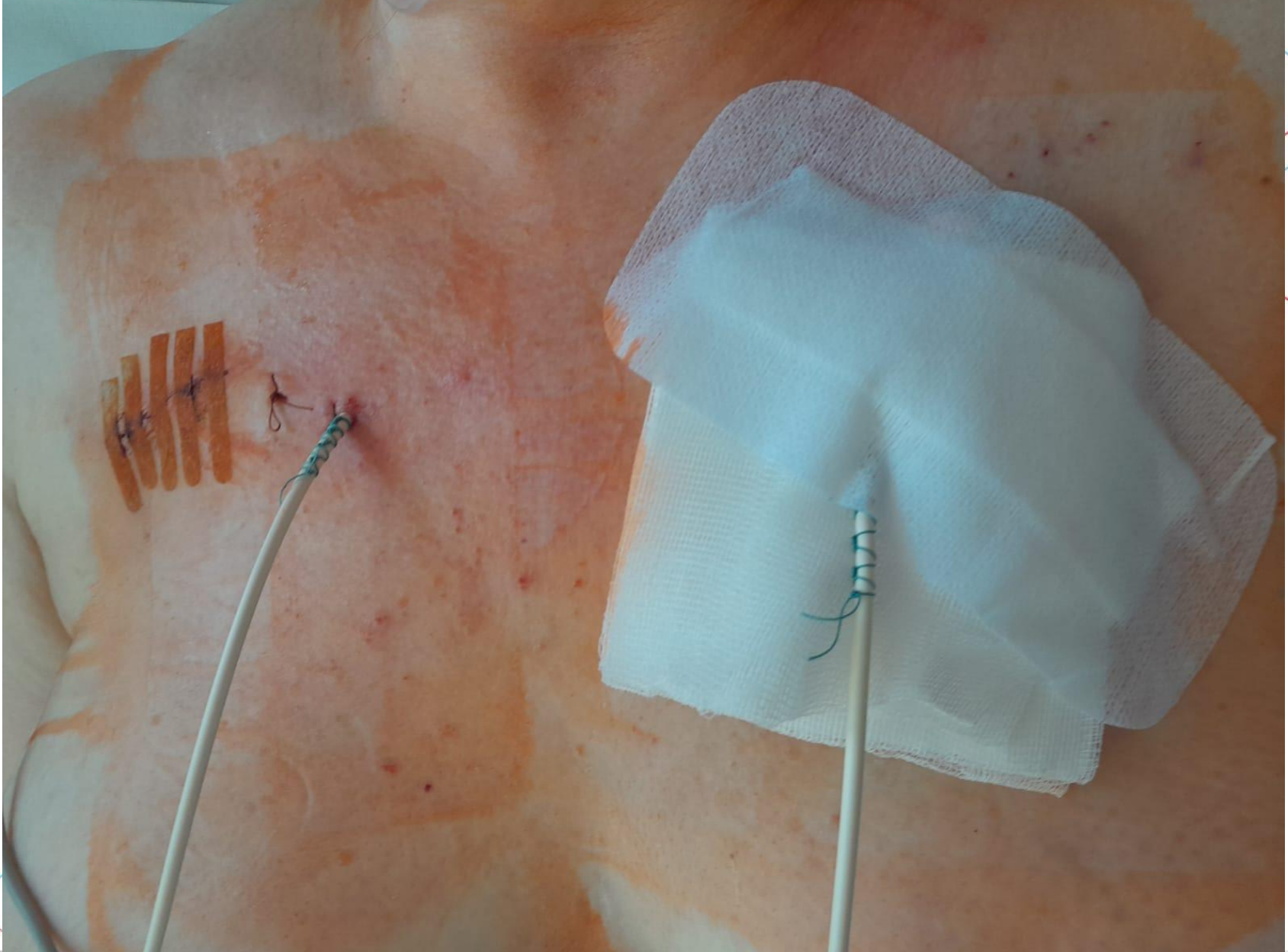


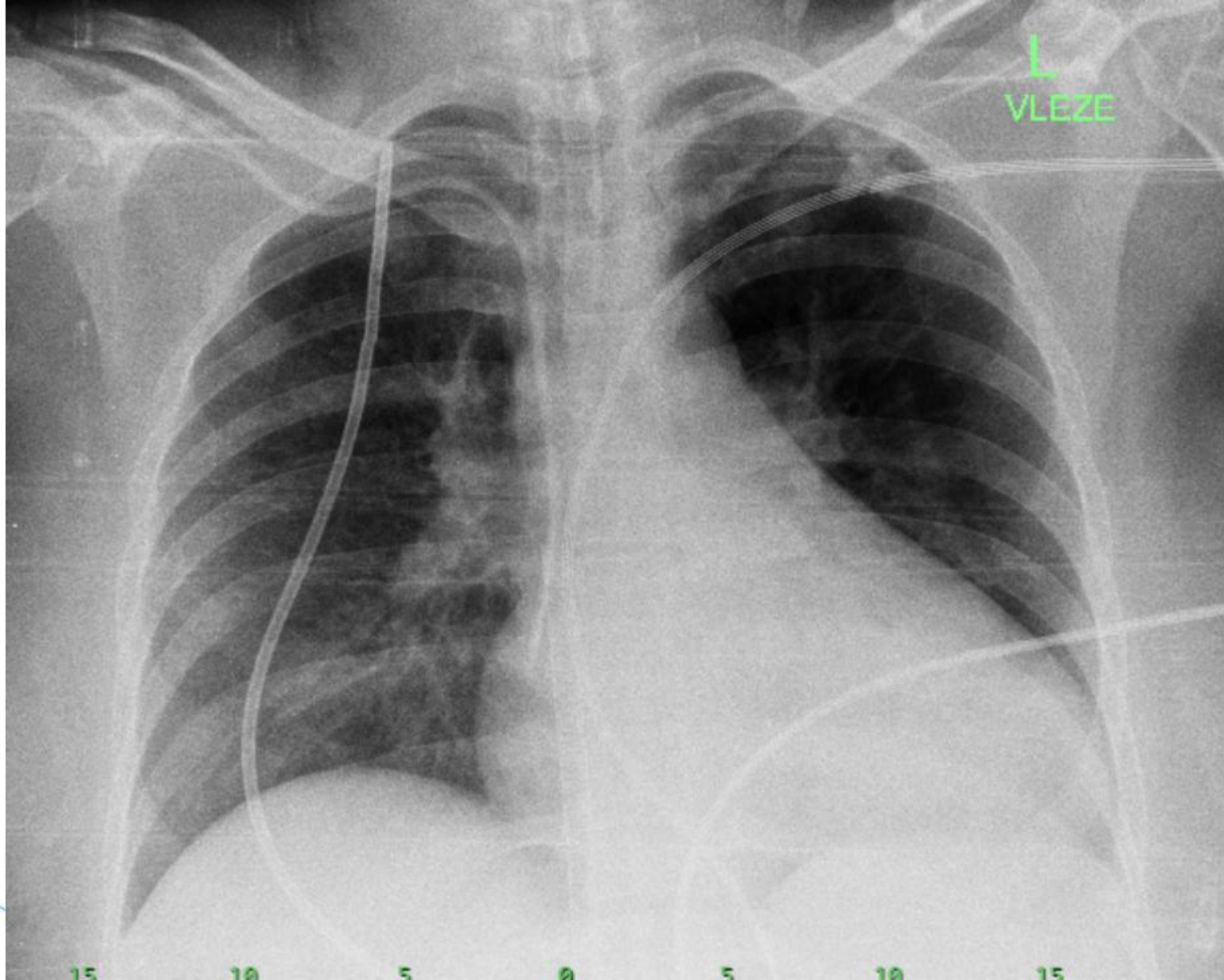
# Fixace drénu





● ○ REDMI NOTE 8T  
○ ∞ AI QUAD CAMERA





L  
VLEZE

15

10

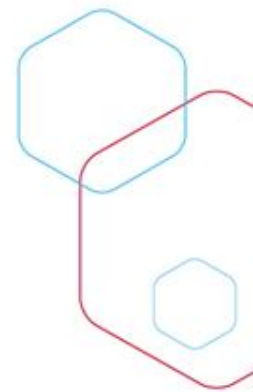
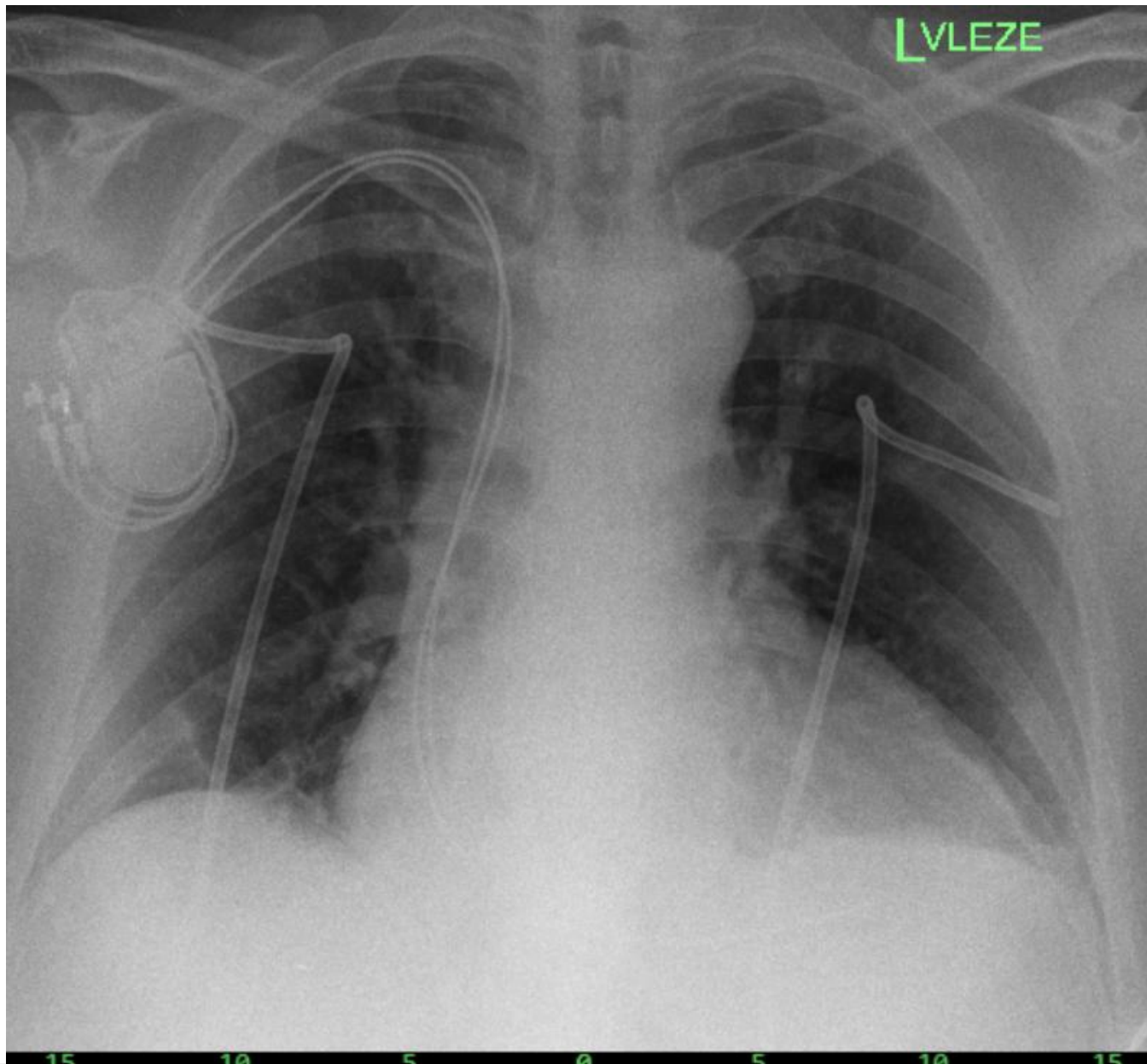
5

0

5

10

15

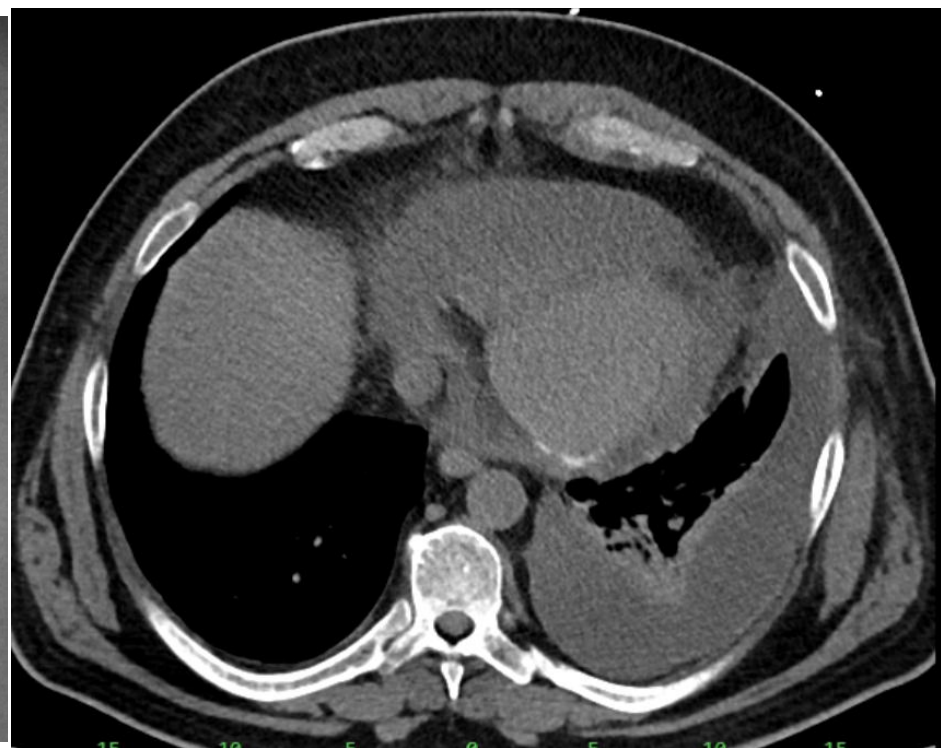
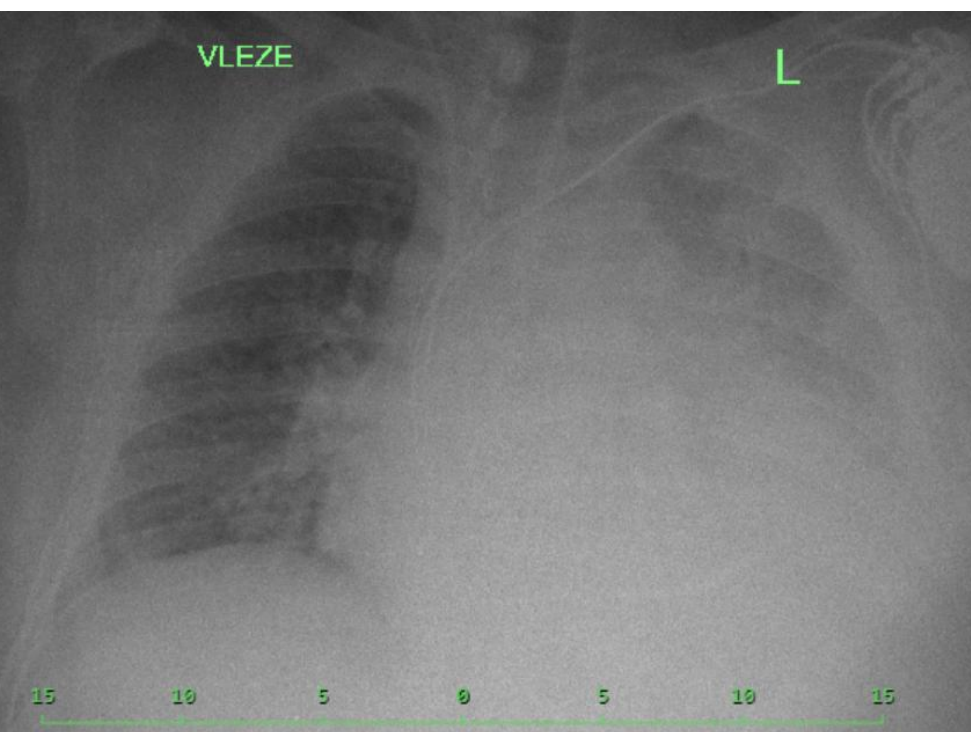
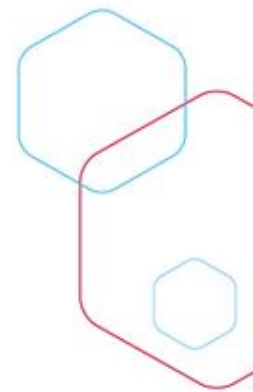


# Monitorace a extrakce

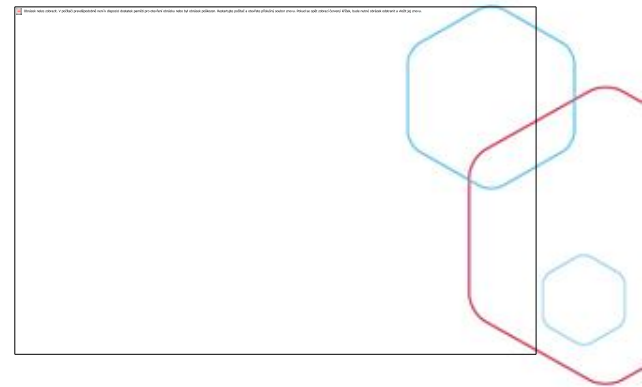
- Monitorace pomocí UZ, alternativně RTG
- Drén ponechat do absence odvodu vzduchu
- Následně drén uzavřít na 2h
- Po otevření kontrolní UZ/RTG
- Při absenci PNO a odvodu vzduchu drén ex.



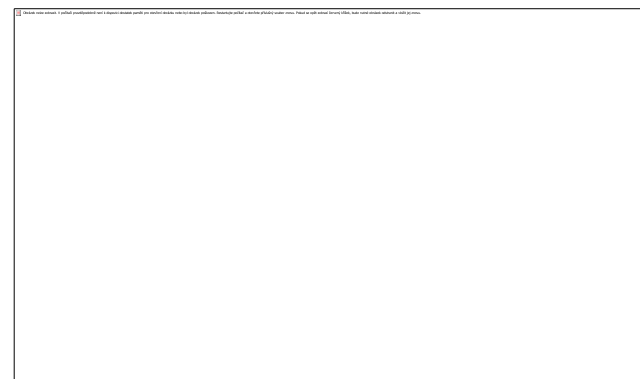
# Empyém a hemothorax

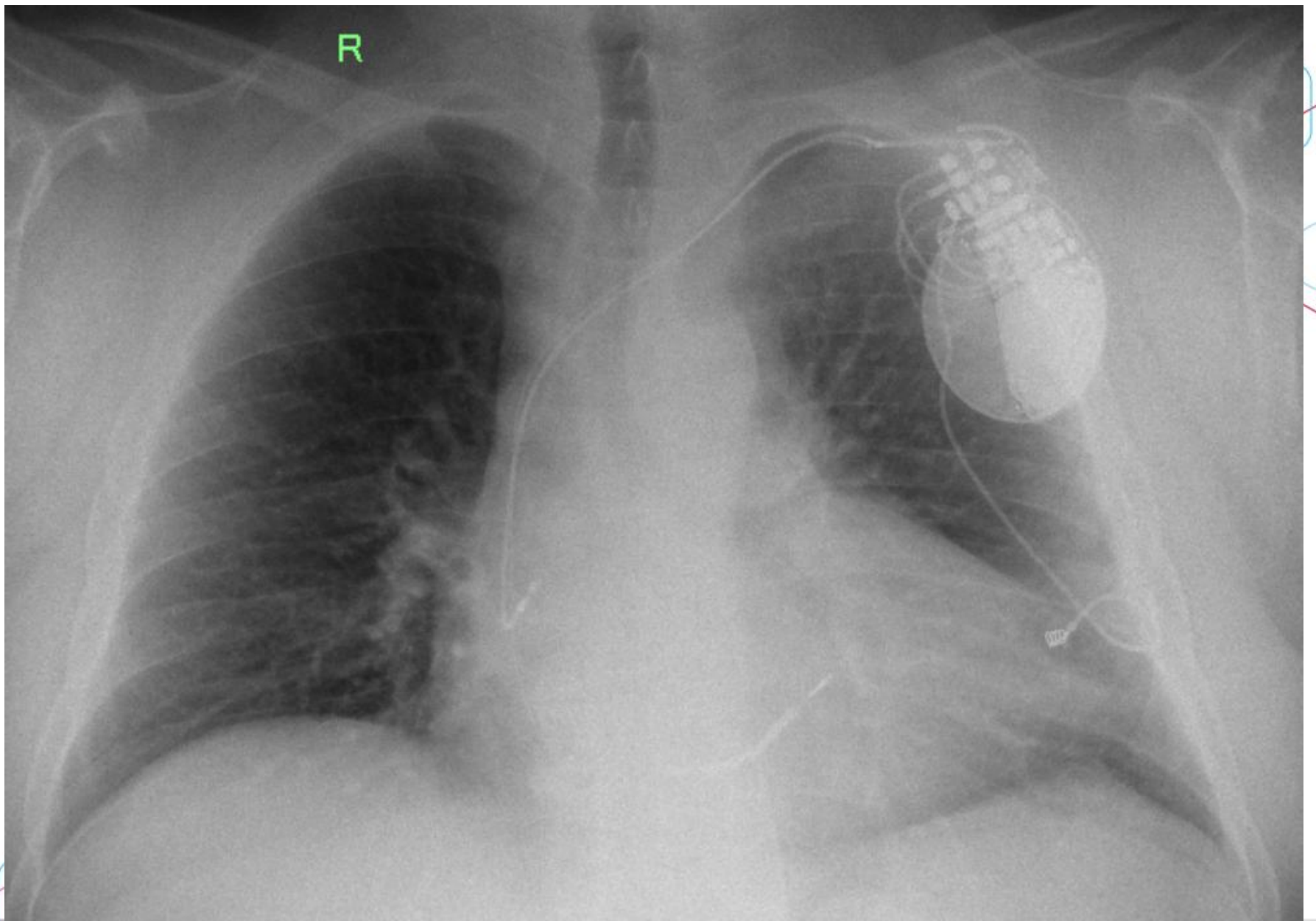


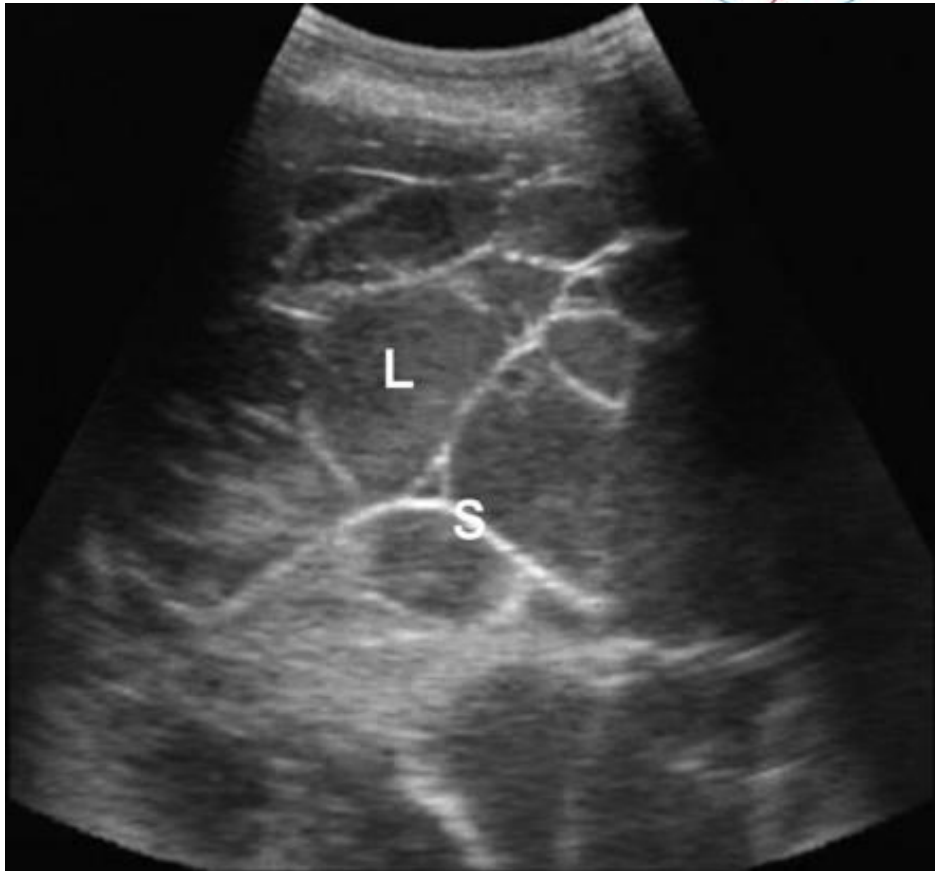
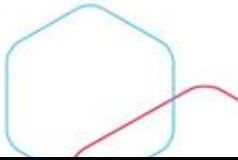
# Drenáž hemothoraxu



- UZ -> hyperechogenní septovaný výpotek charakteru hemothoraxu
- Ověřeno probatorní punkcí
- Trokarovou metodou zaveden drén 20F







<https://emedicine.medscape.com/article/355524-overview>

<https://breathe.ersjournals.com/content/9/2/132>



# Děkuji Vám za pozornost!

