

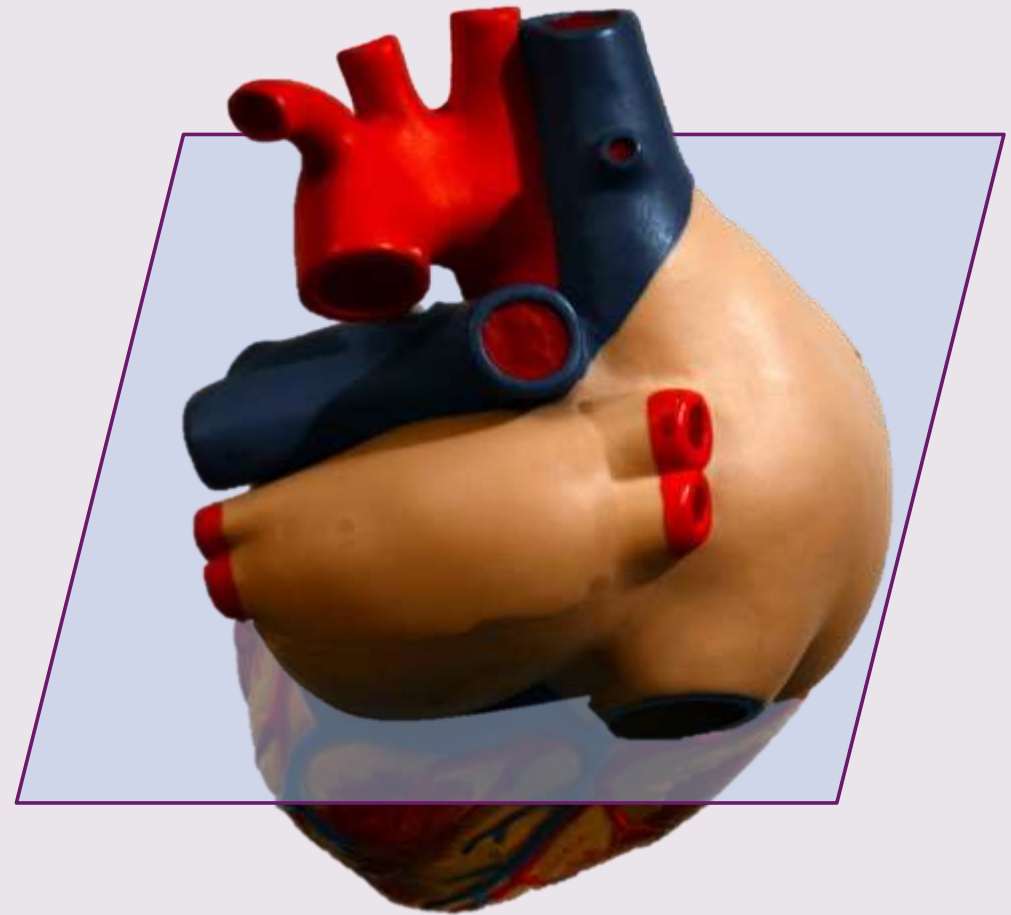
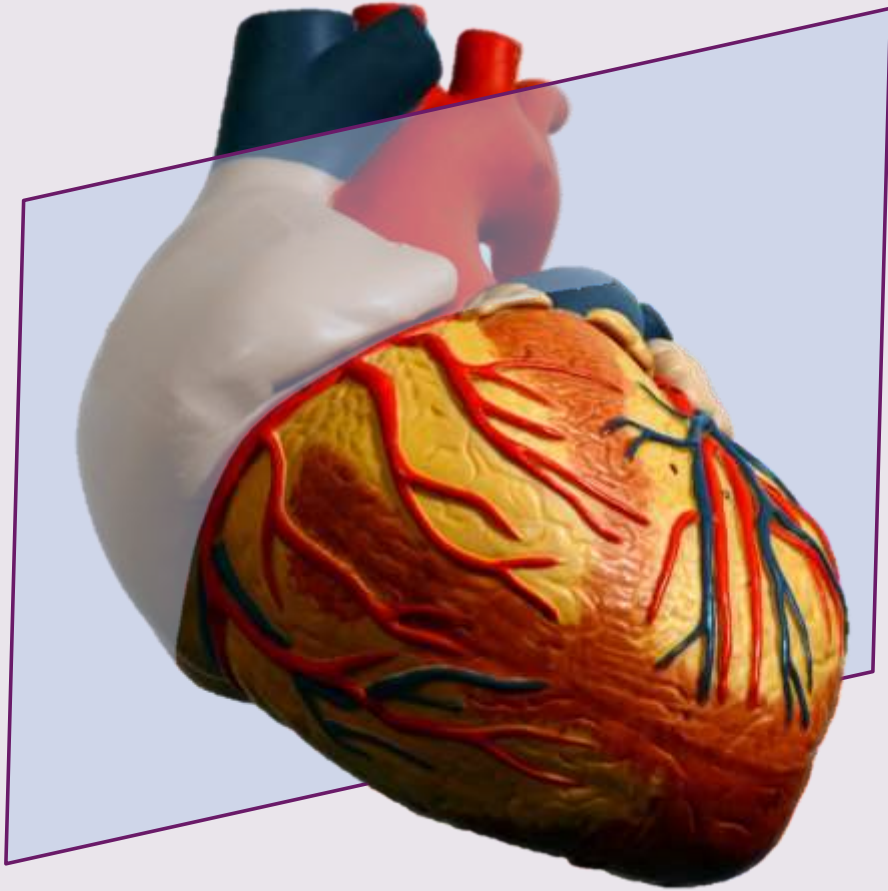
Síňové a komorové septum ve 3D ECHO obraze

S. Kovalová
J. Nečas

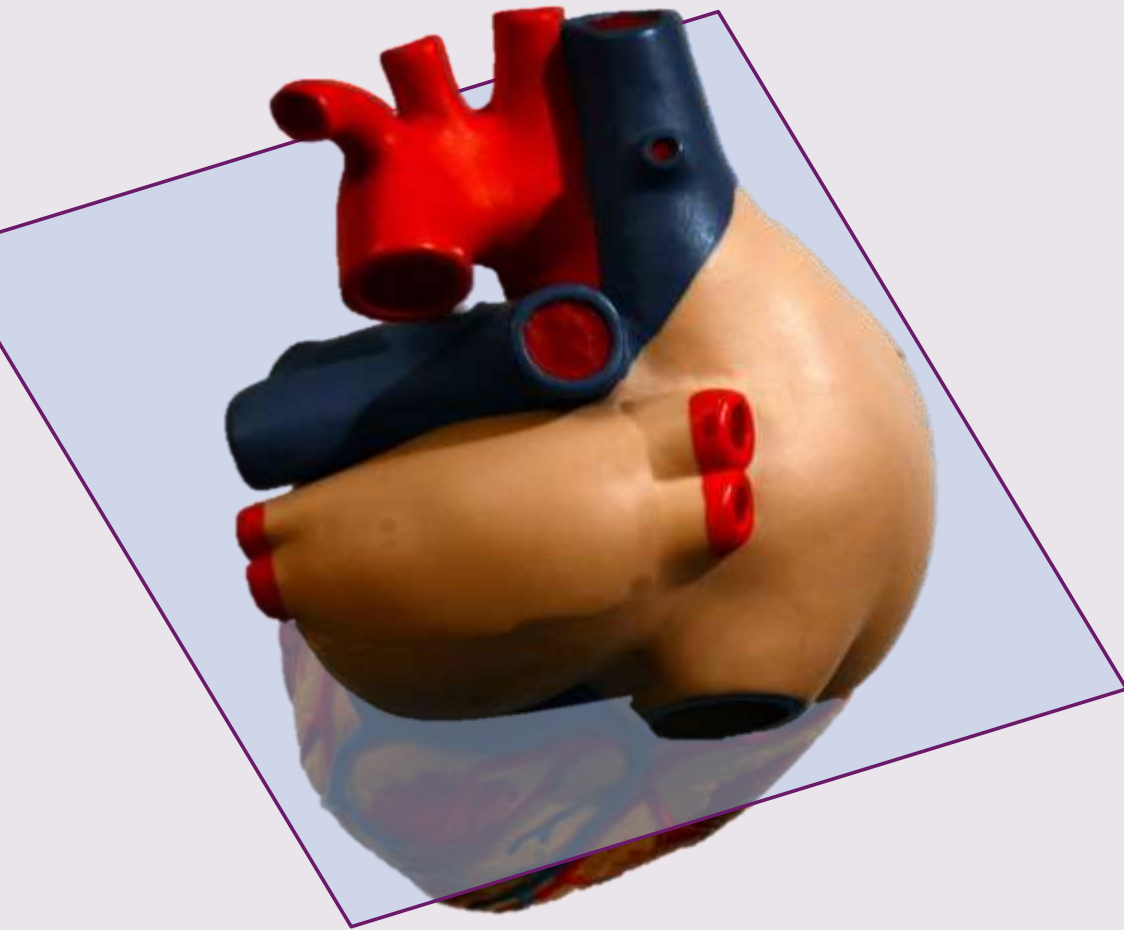


Centrum
kardiovaskulární
a transplantační chirurgie
Brno

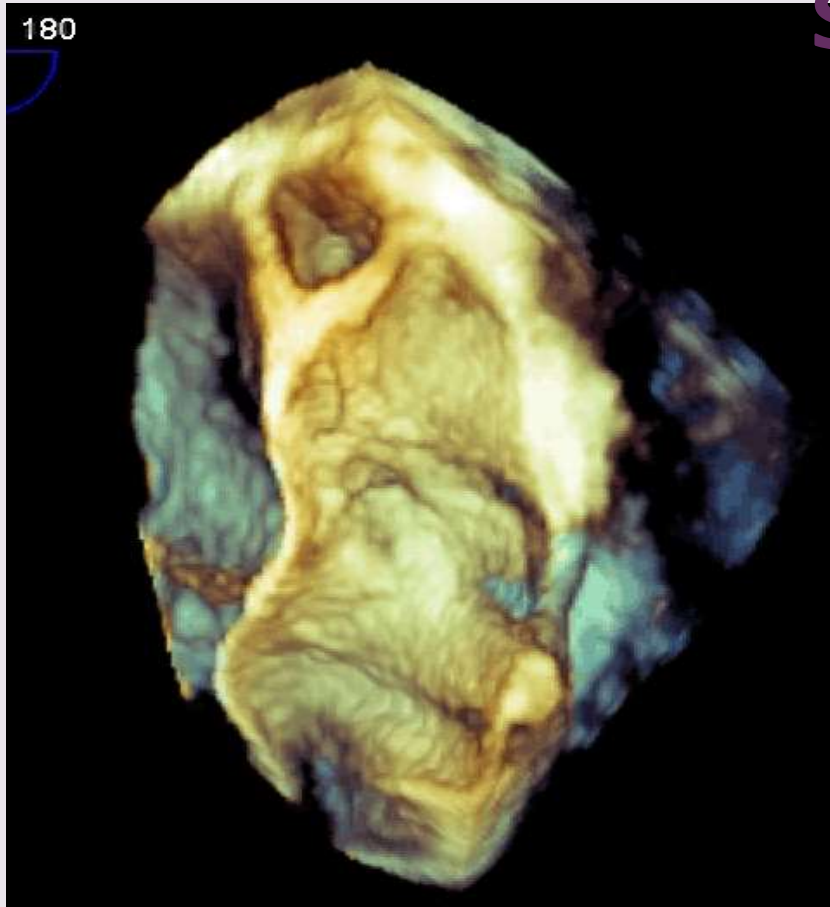
Klíč k srdeční anatomii



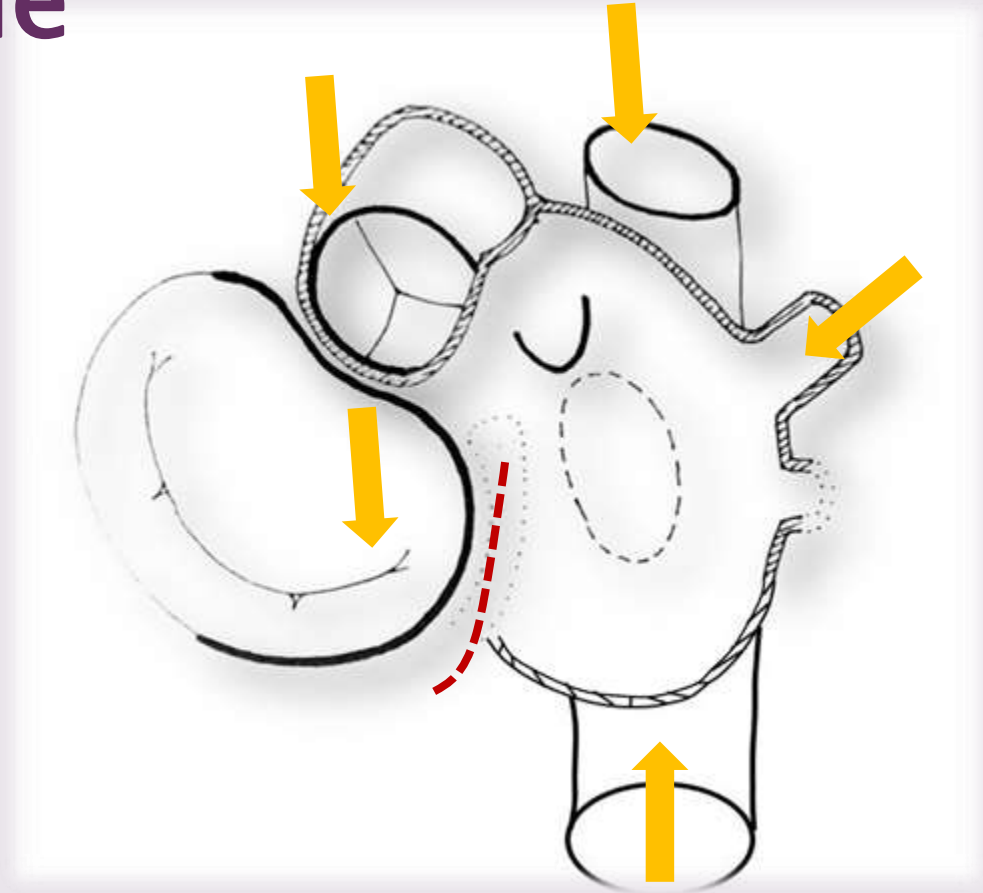
Baze srdeční



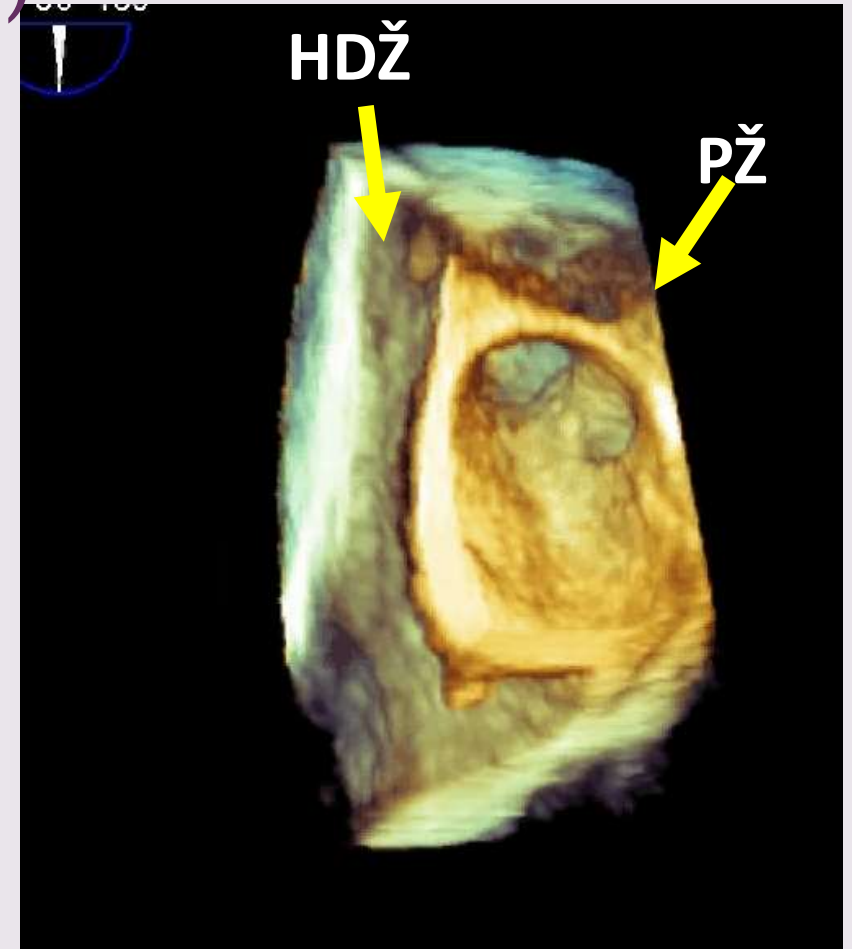
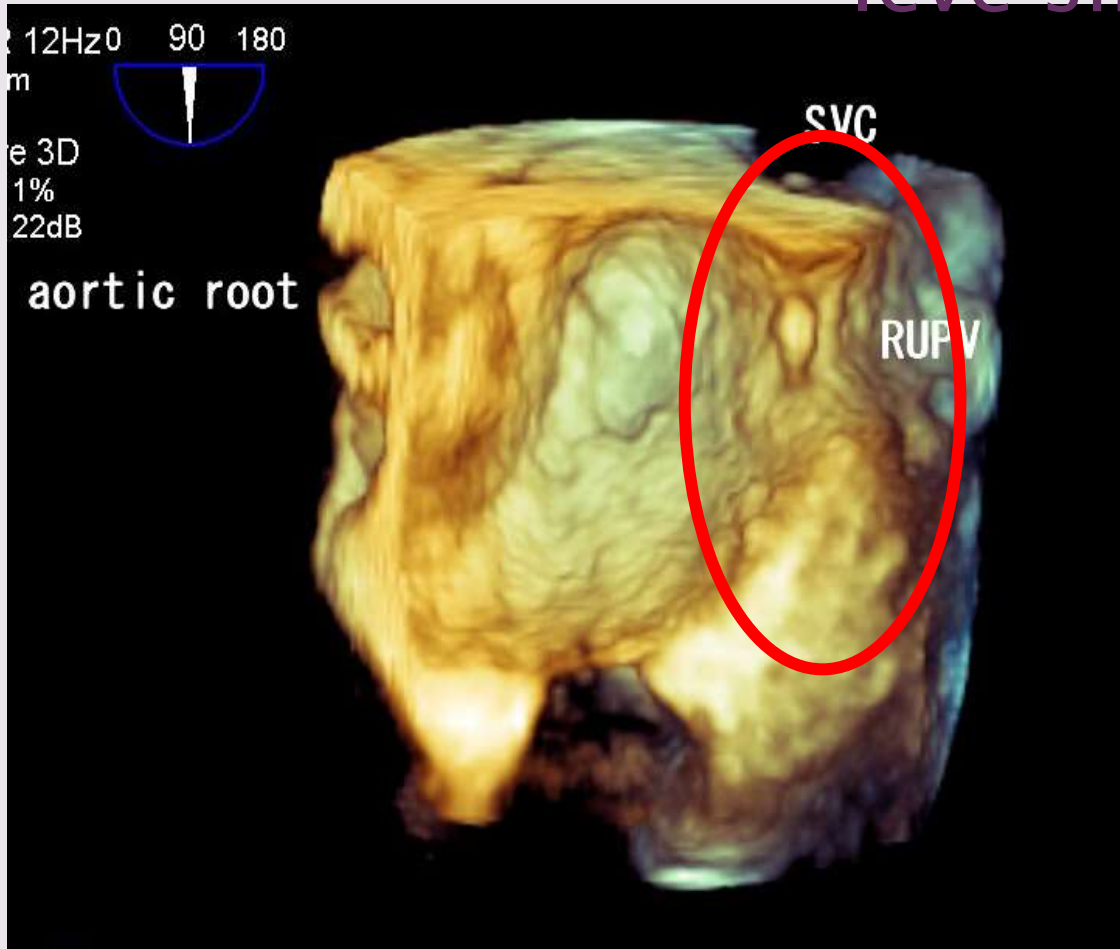
Síňové septum – pohled z levé síně



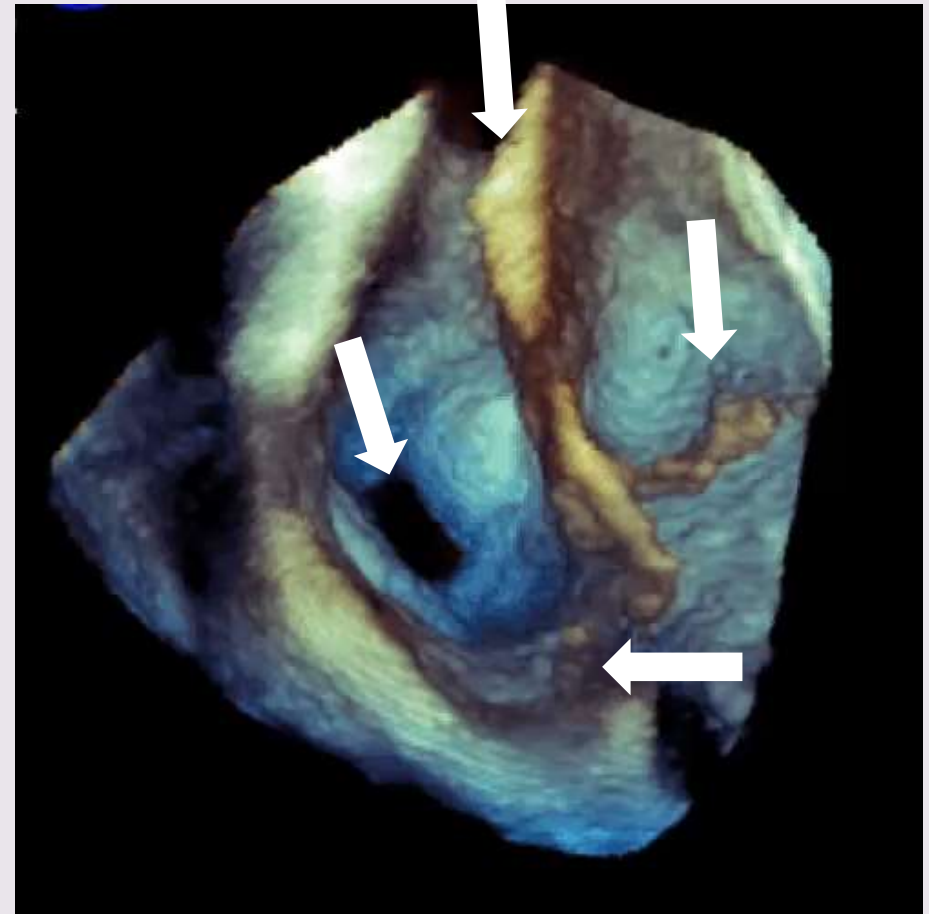
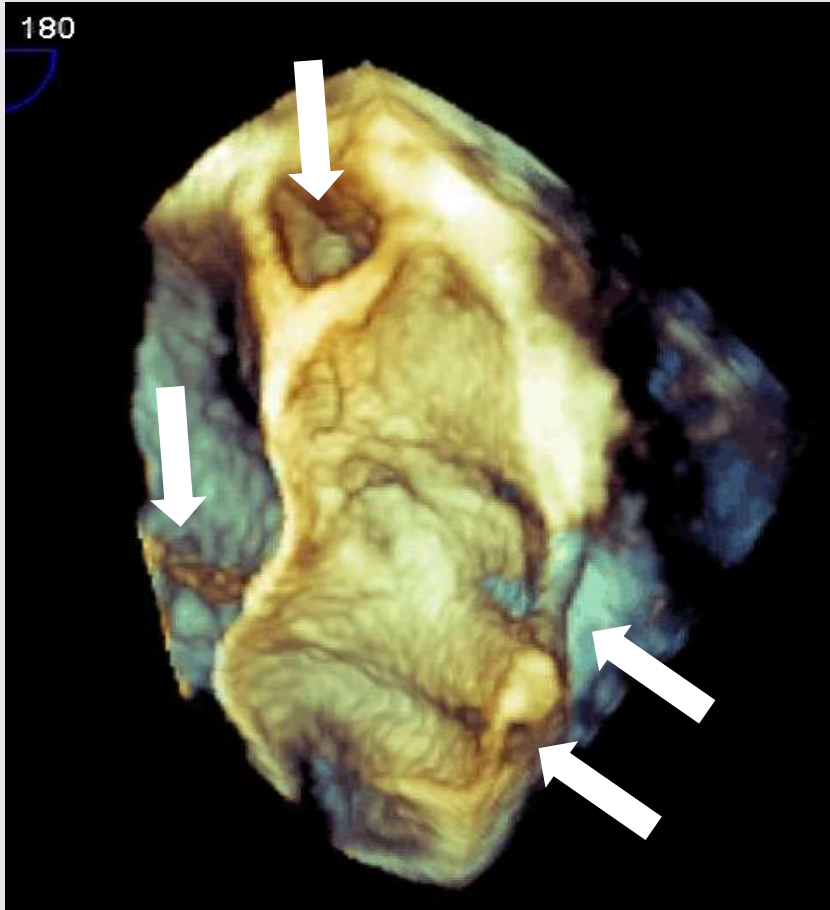
Síňové septum – pohled z levé síně



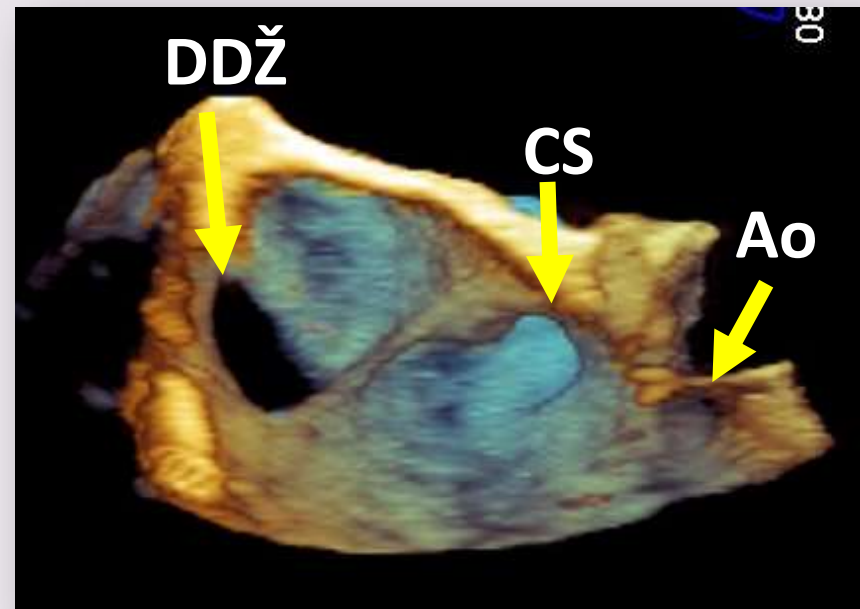
Síňové septum a pravostranné plicní žíly (pohled z levé síně)



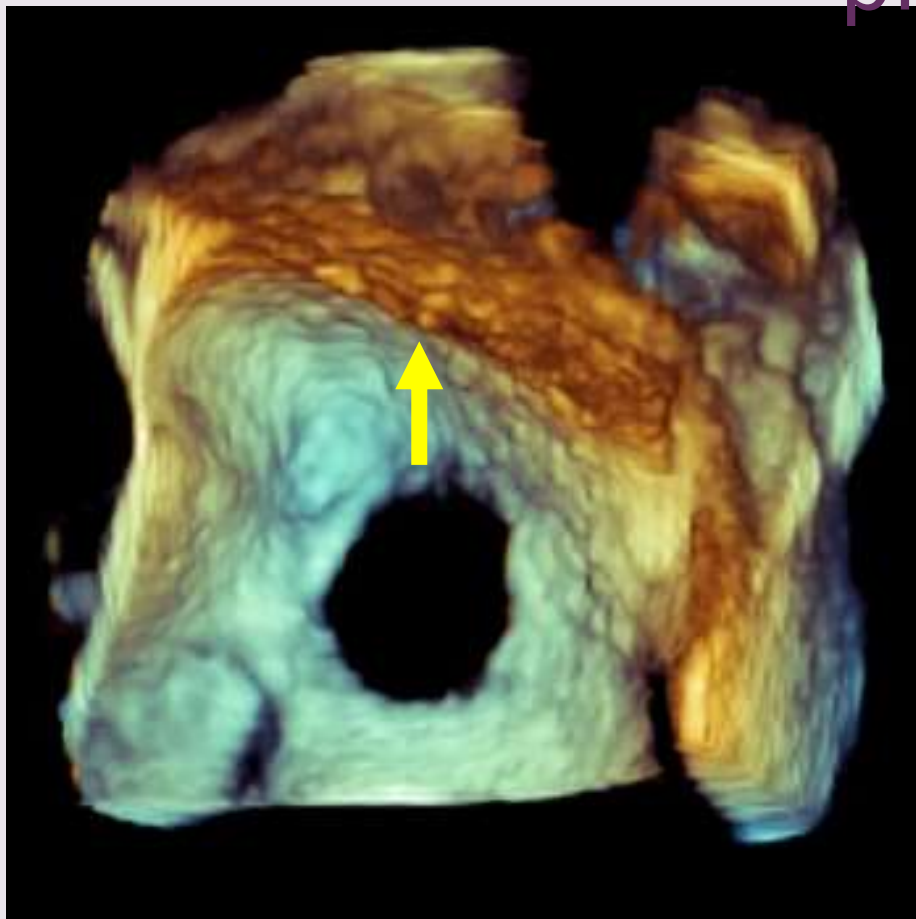
Síňové septum – pohled z levé a pravé síně



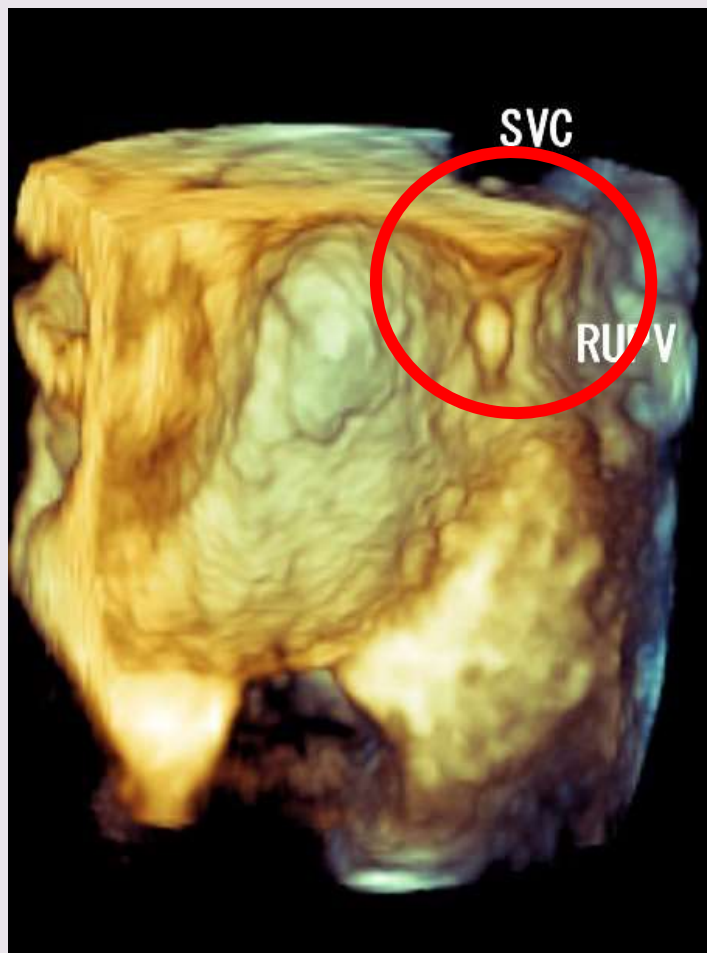
Dolní část síň. septa a „dno“ pravé síně



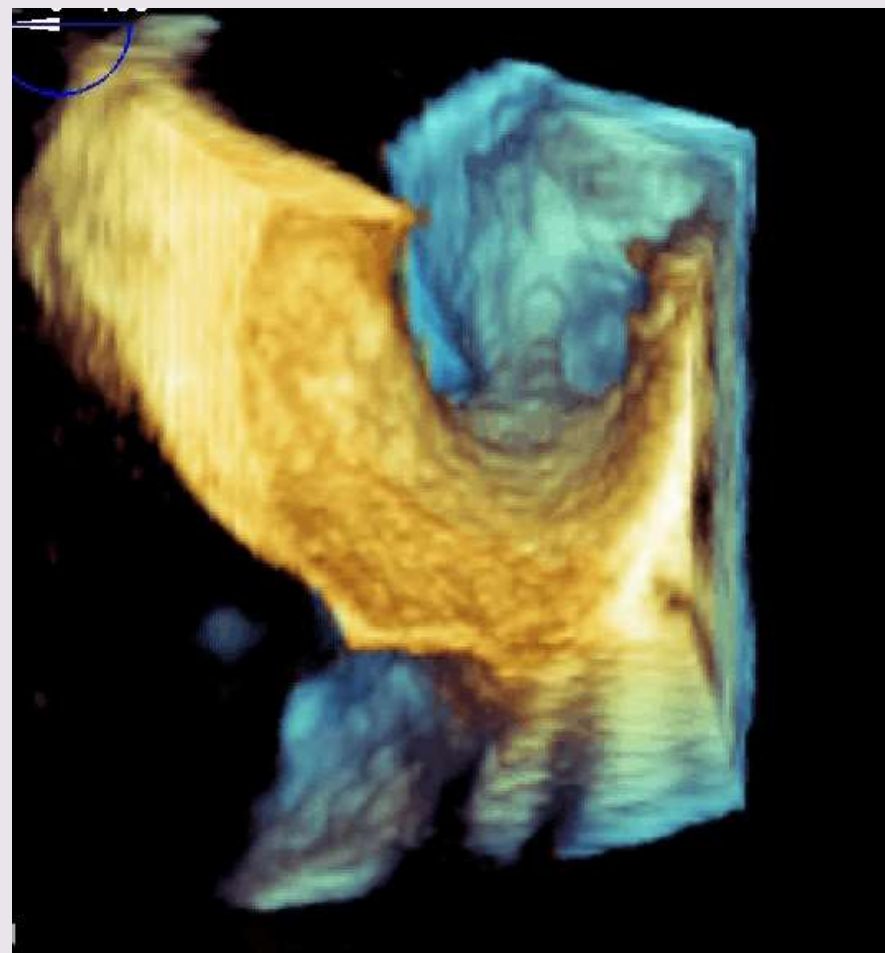
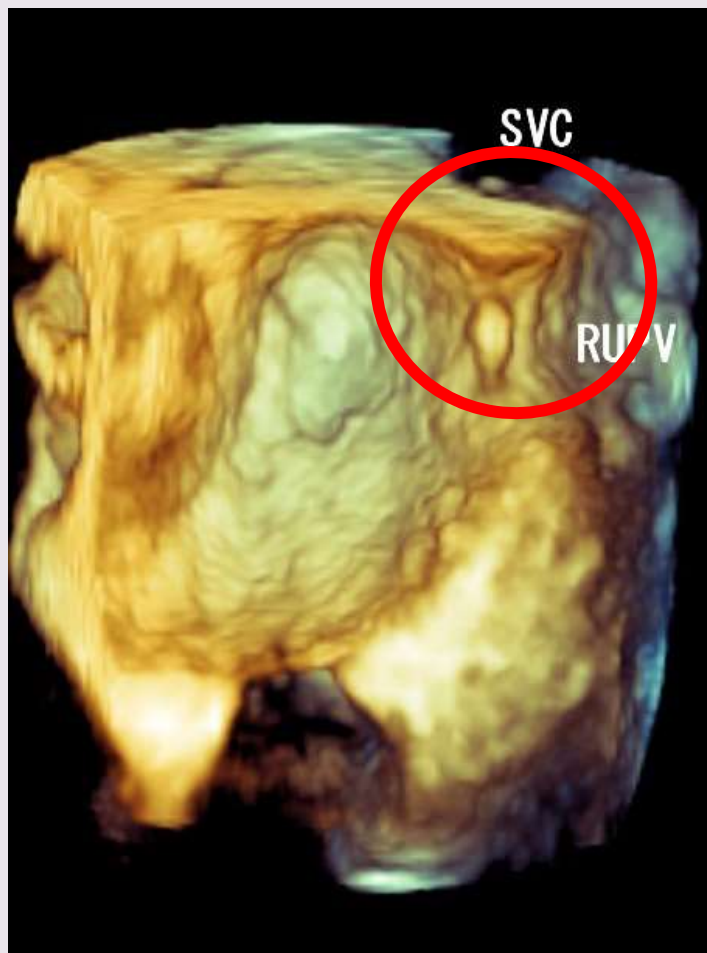
Defekt síňového septa II. typu – pohled z levé a pravé síně



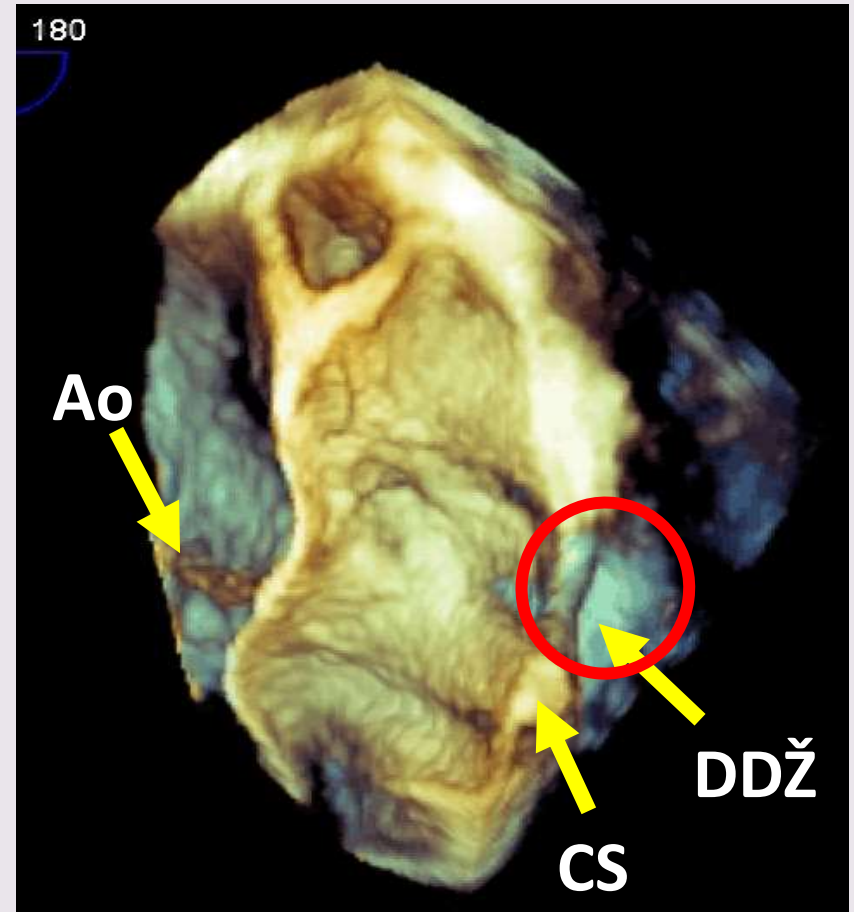
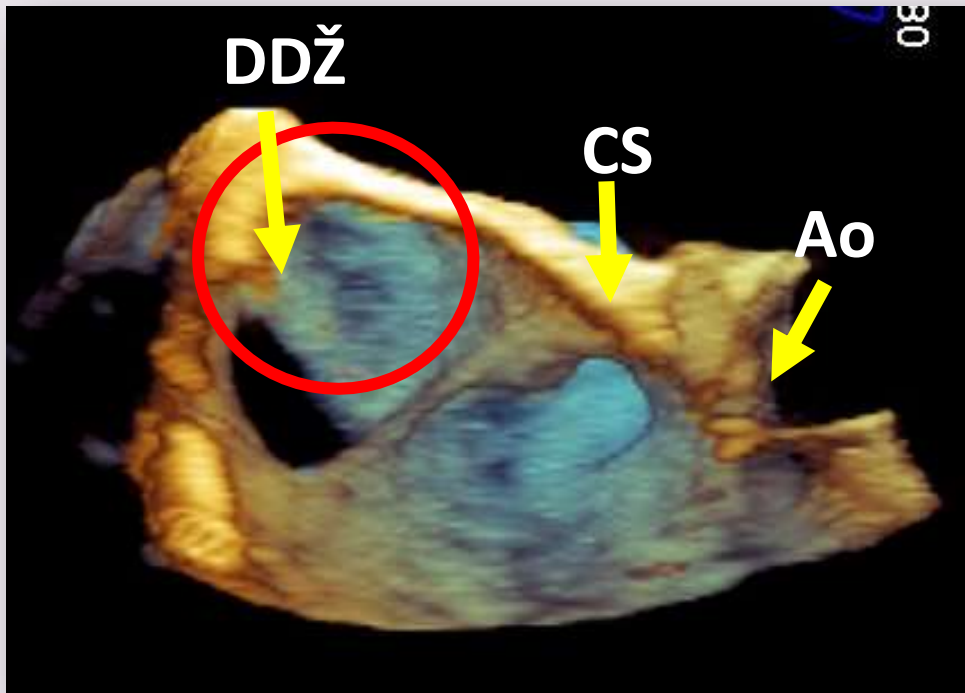
Defekt síňového septa typ sinus venosus superior – pohled z levé síně



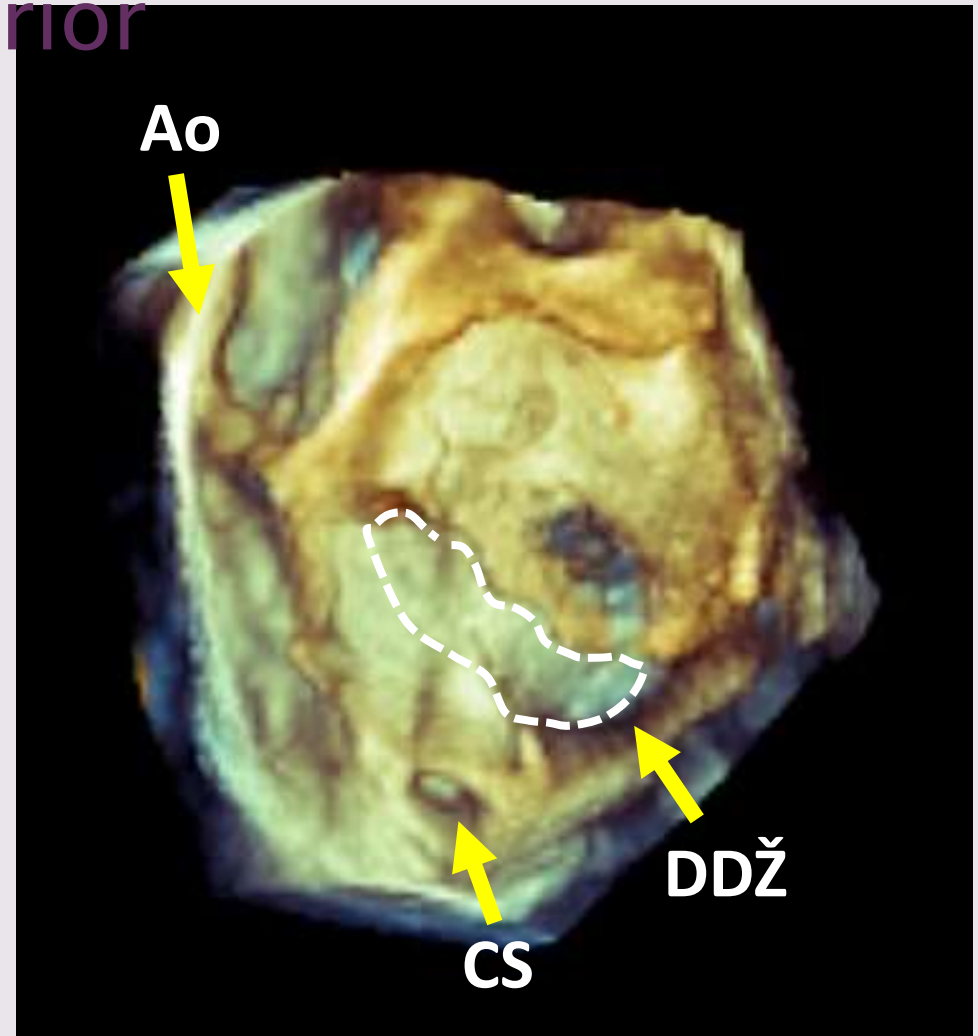
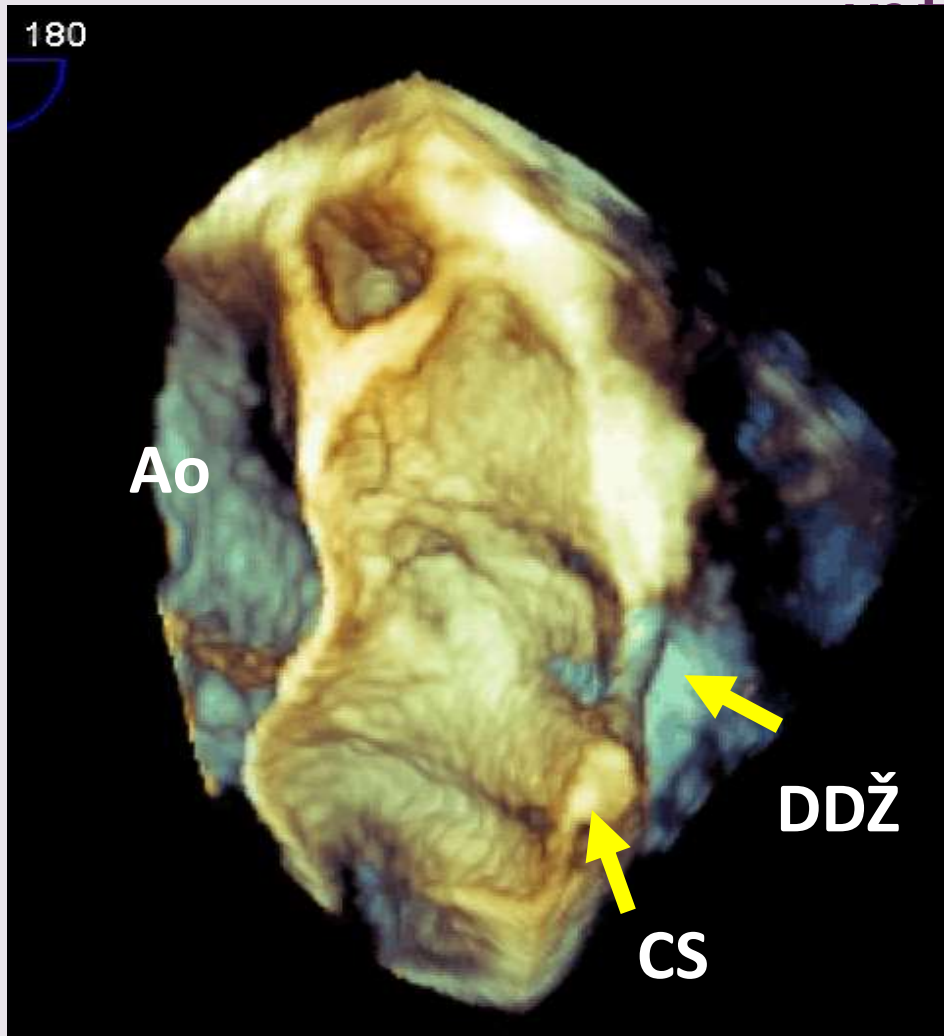
Defekt síňového septa typ sinus venosus superior – pohled z levé síně



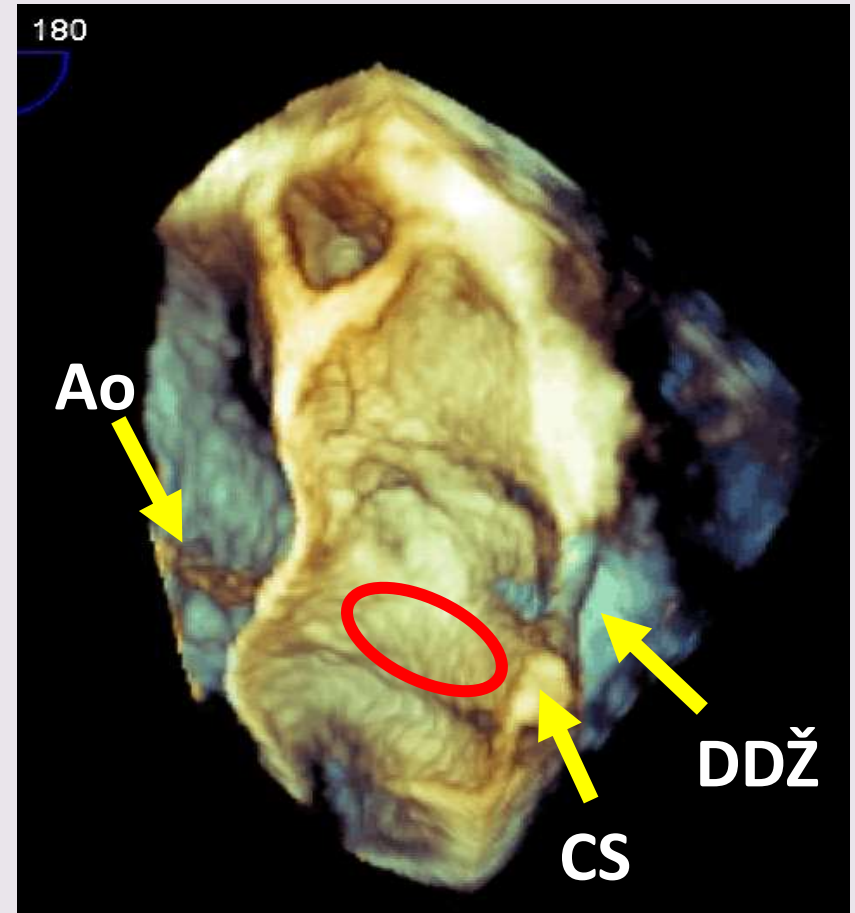
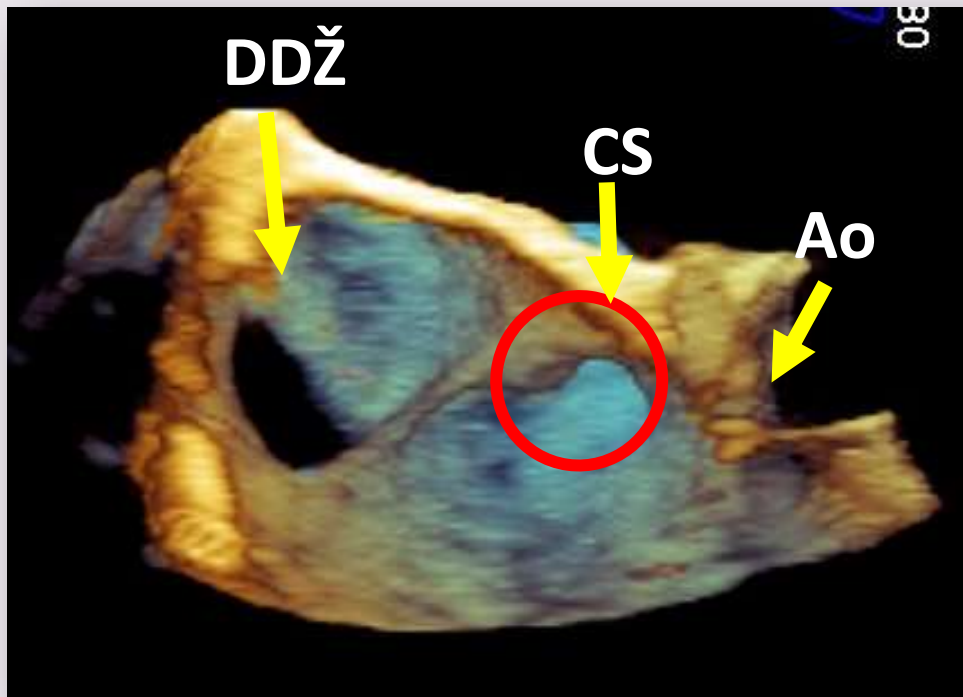
Defekt síňového septa typ sinus venosus inferior



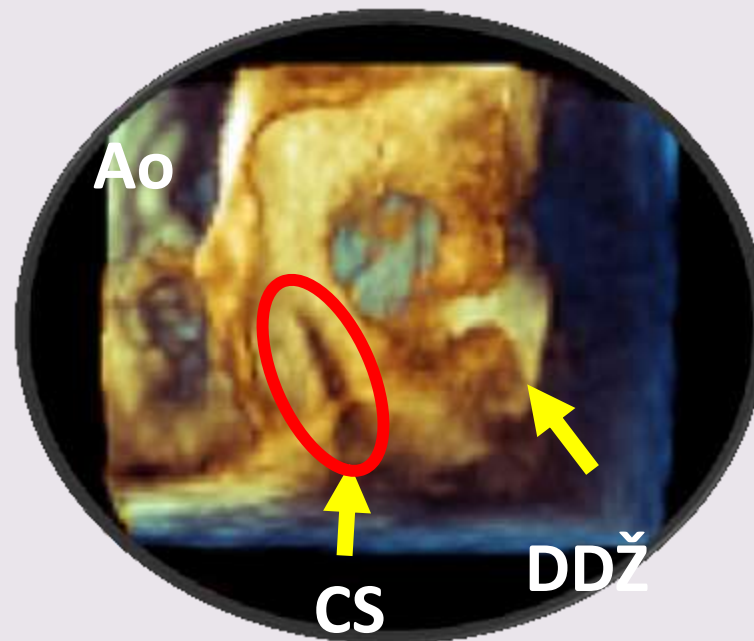
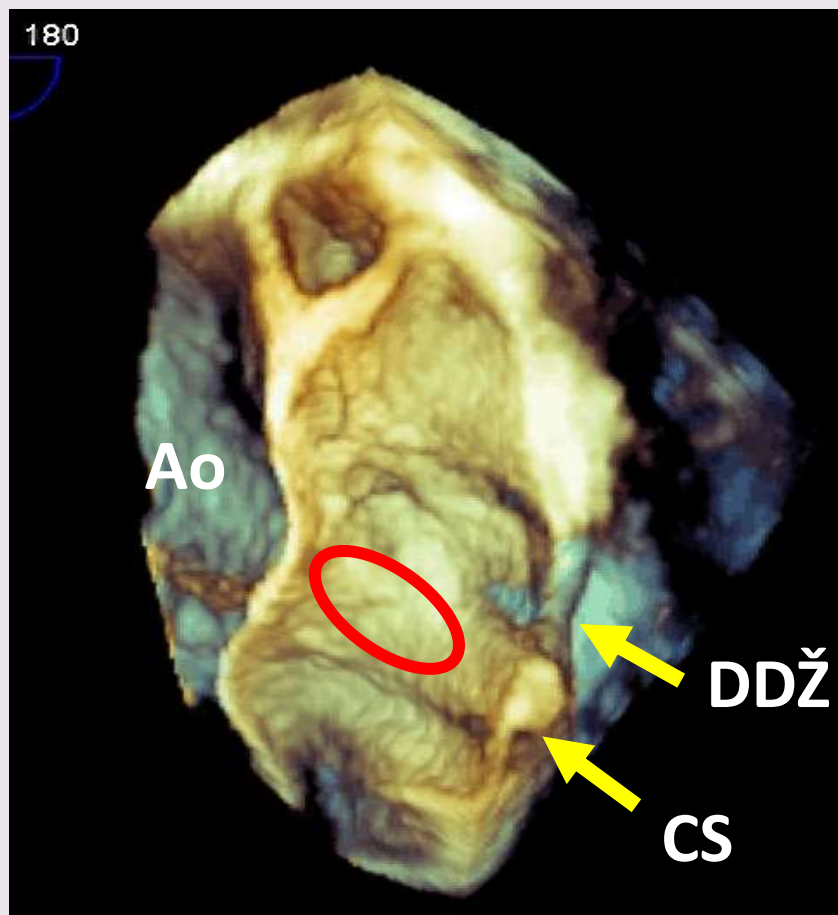
Defekt síňového septa typ sinus venosus inferior



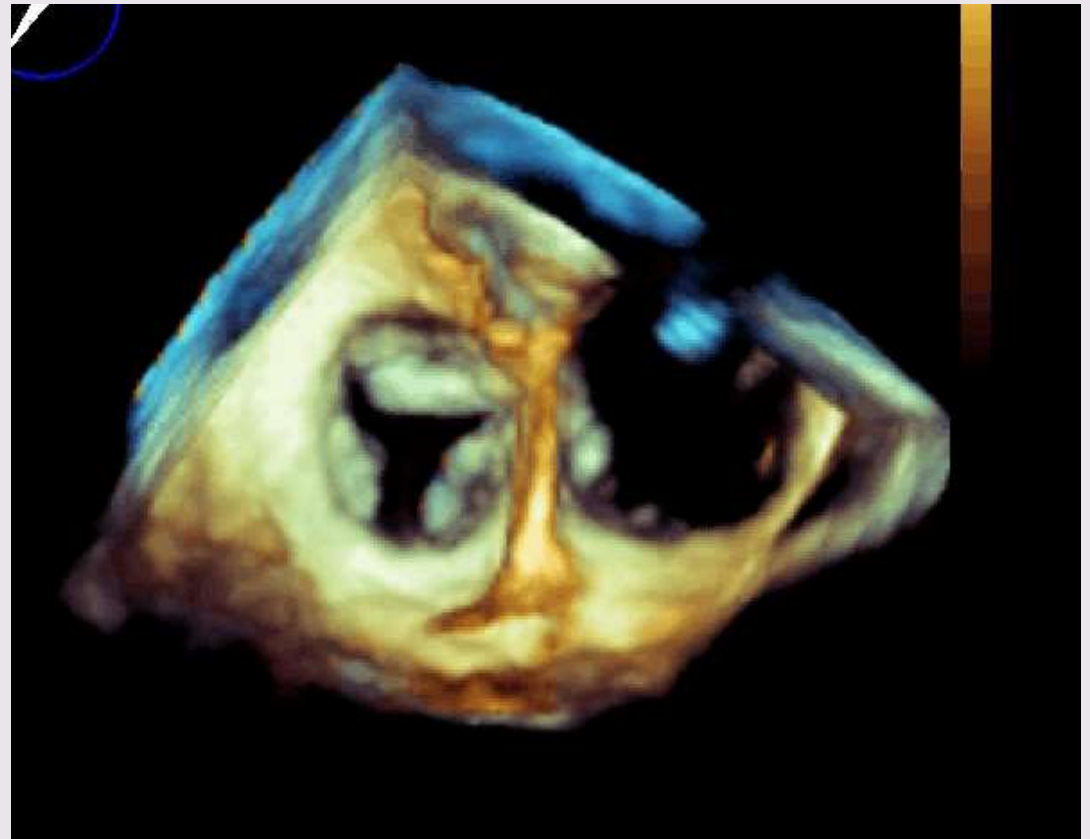
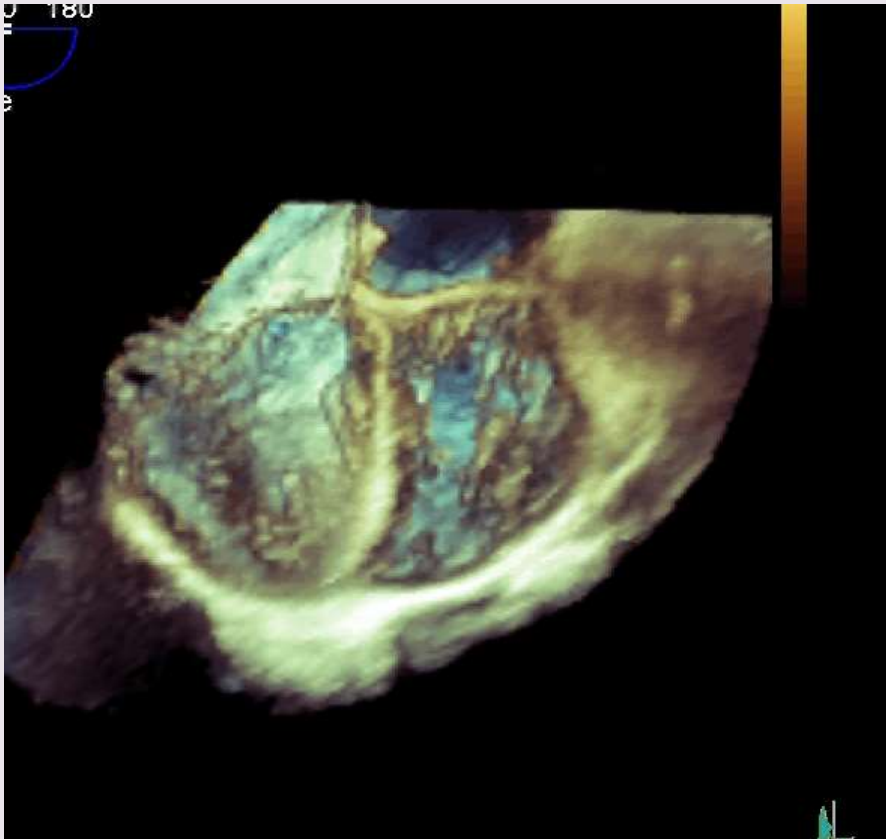
Defekt síňového septa typ unroofed CS



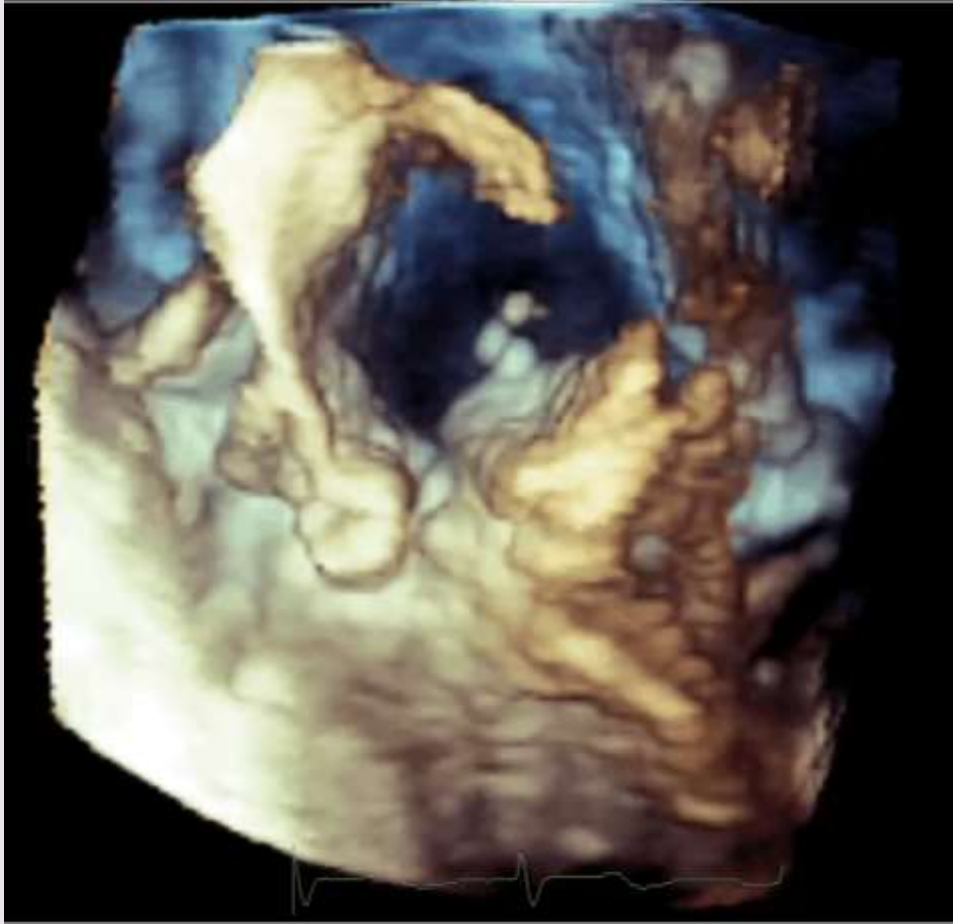
Defekt síňového septa typ unroofed CS



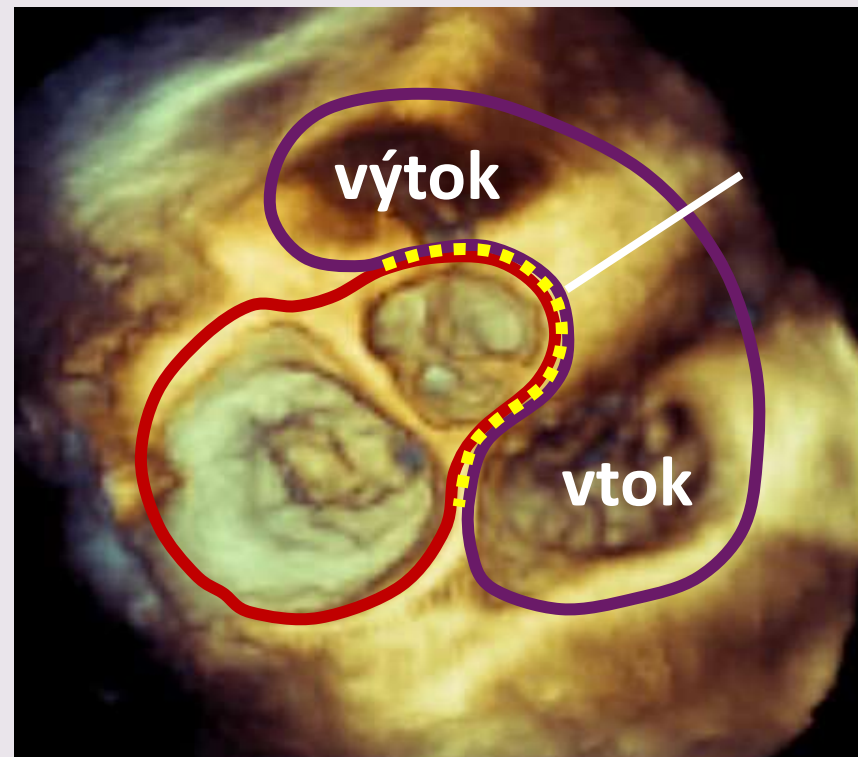
Defekt síňového septa I. typu



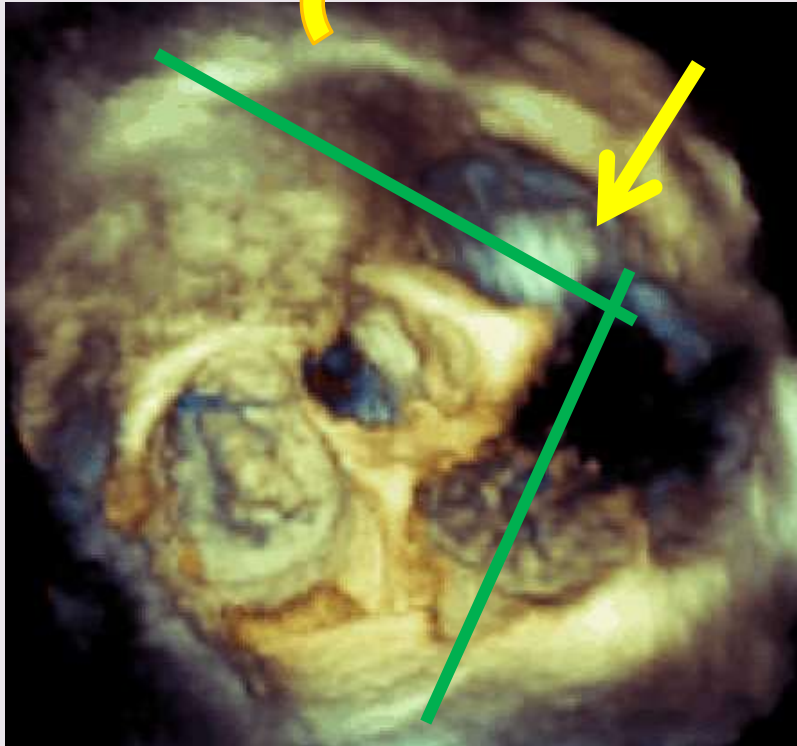
Defekt síňového septa I. typu pohled zleva



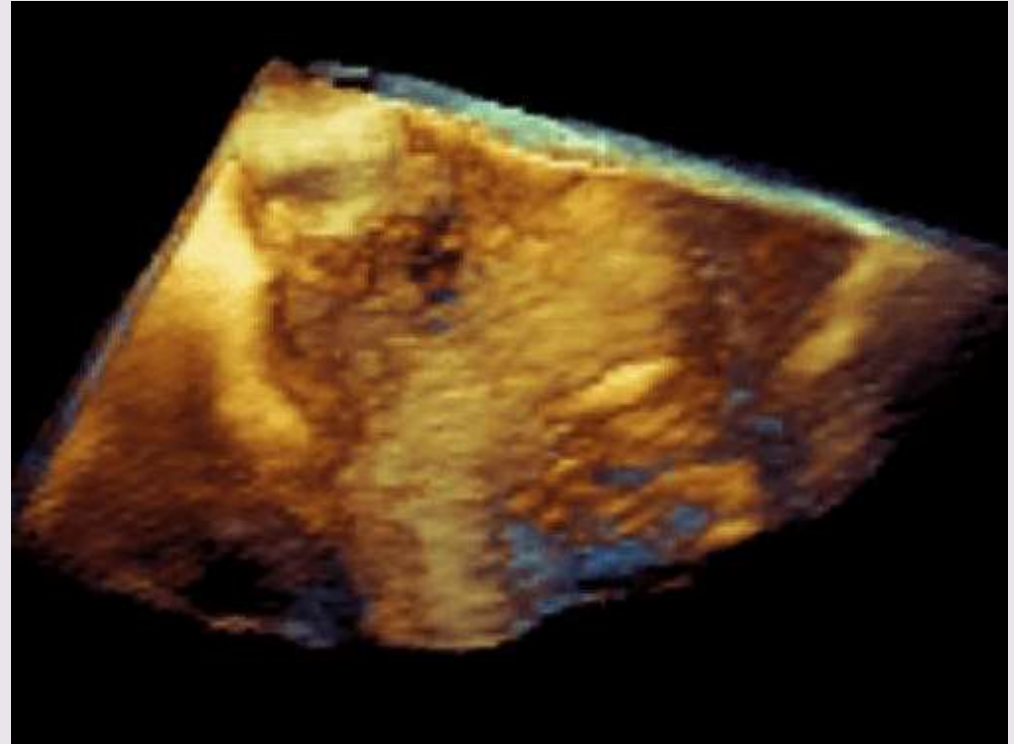
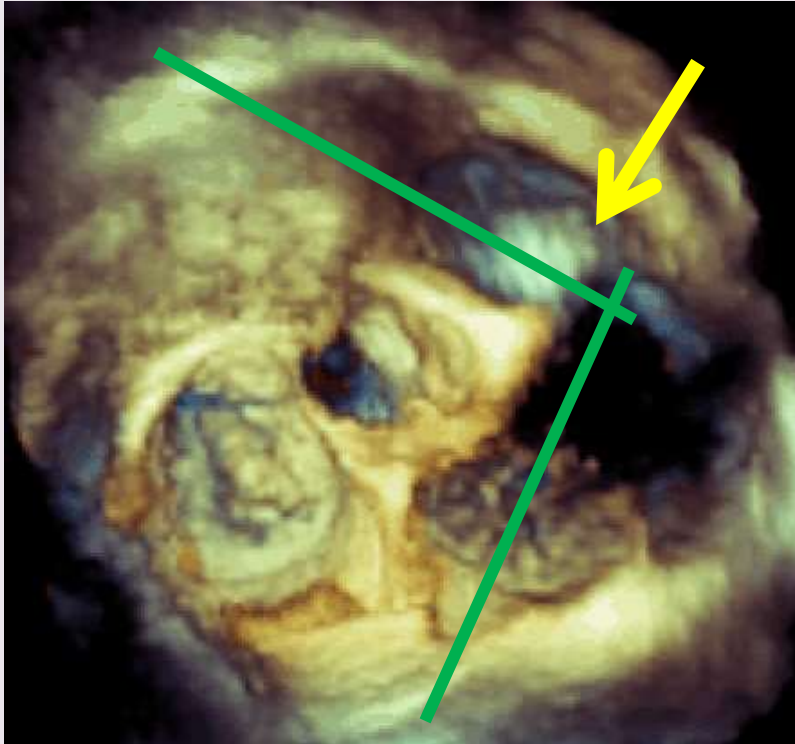
Příčný řez komorami na úrovni baze srdeční



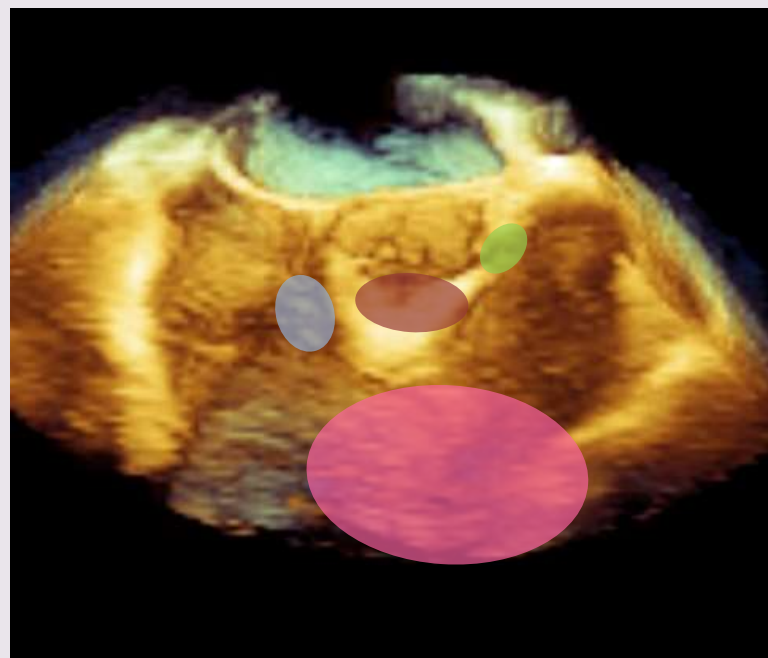
Komorové septum pohled z pravé komory



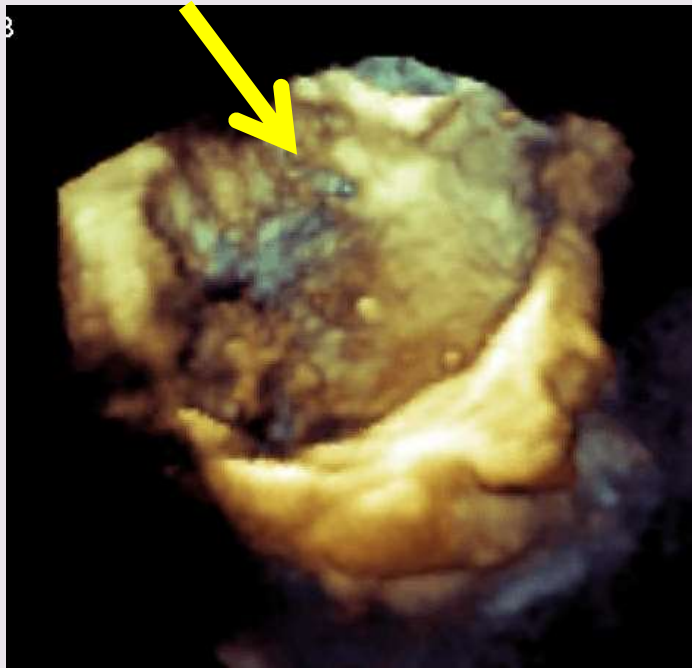
Komorové septum pohled z pravé komory



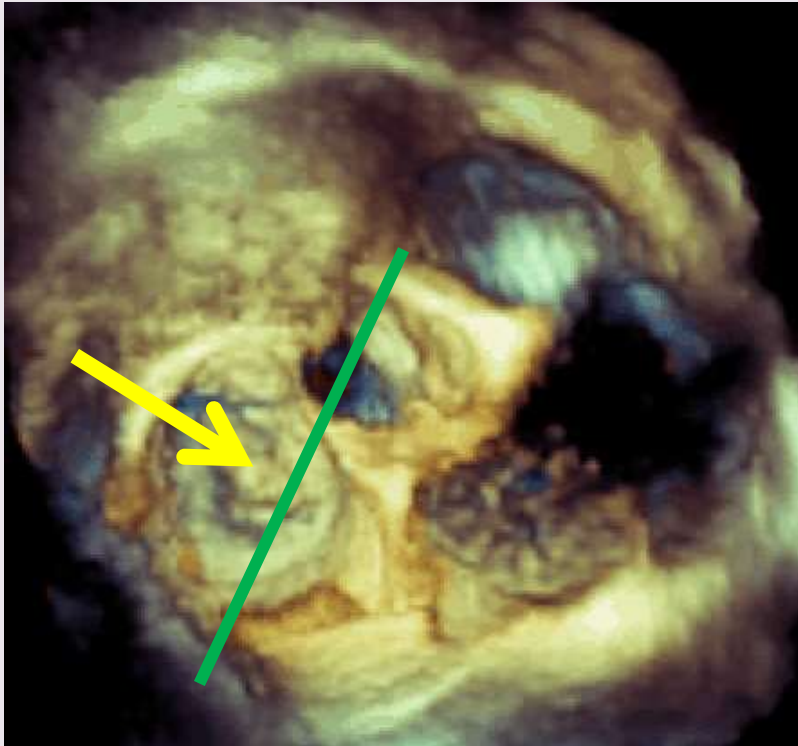
Lokalizace defektů komorového septa



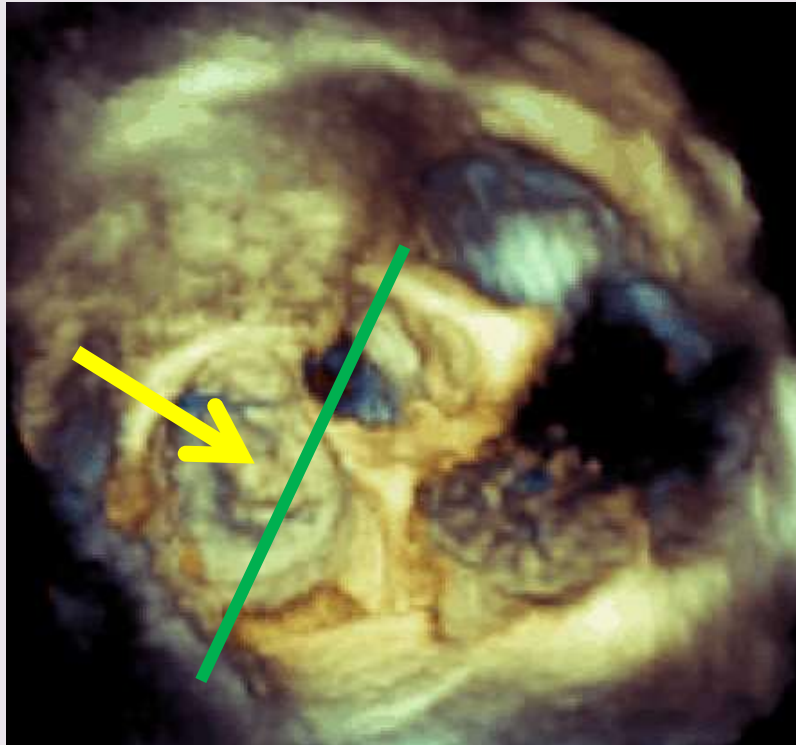
Komorové septum pohled z pravé komory



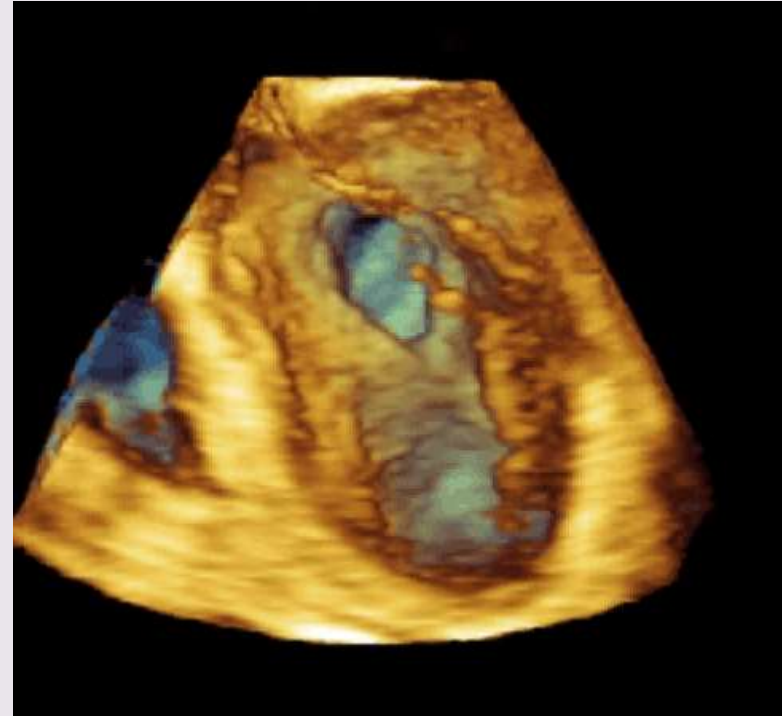
Komorové septum pohled z levé komory



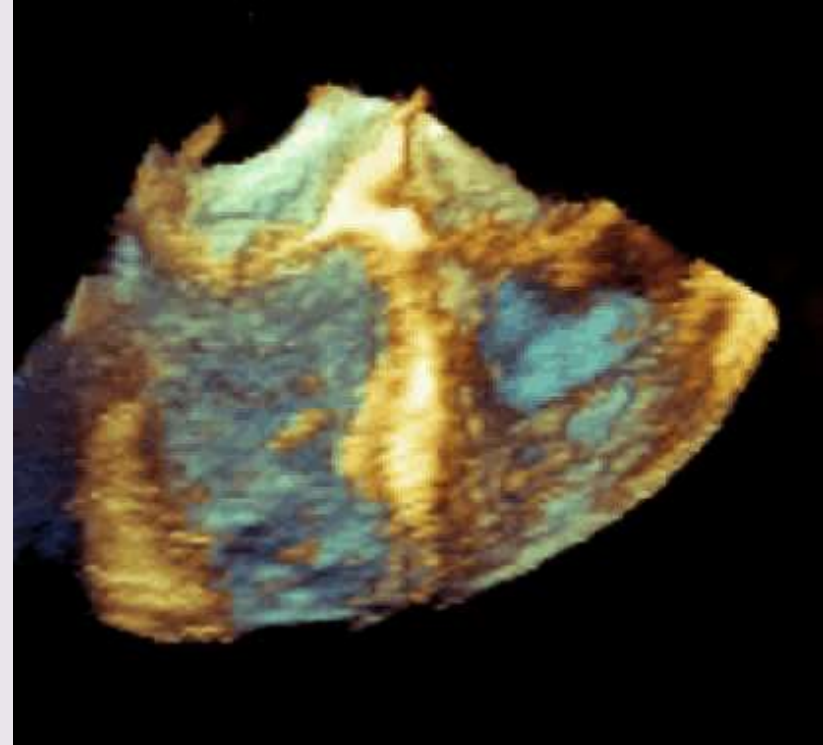
Komorové septum pohled z levé komory



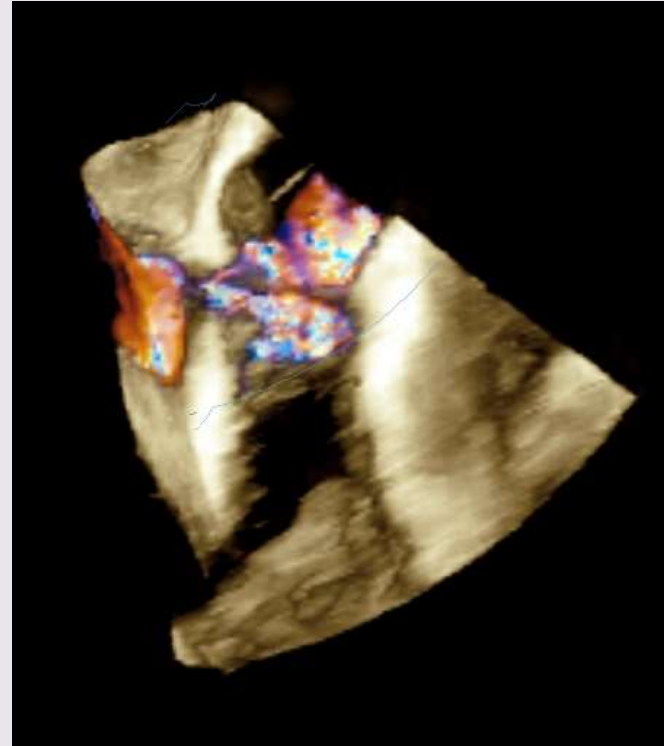
Komorové septum pohled z levé komory



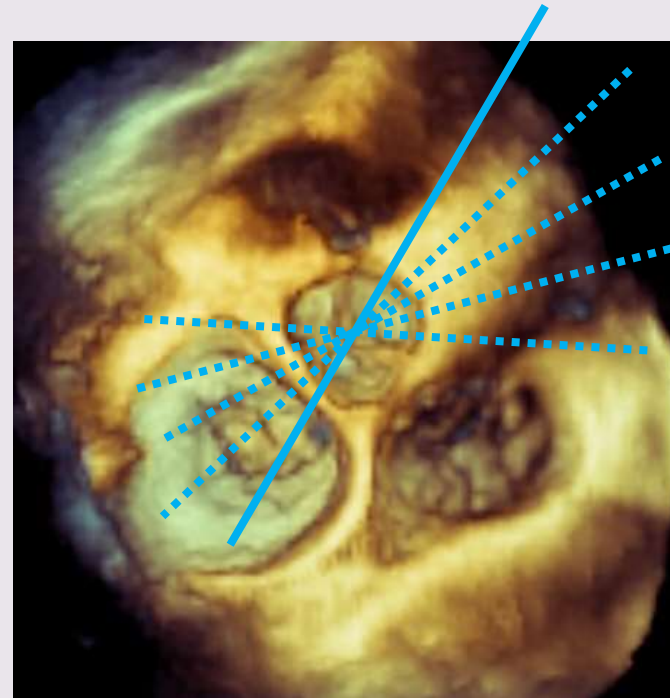
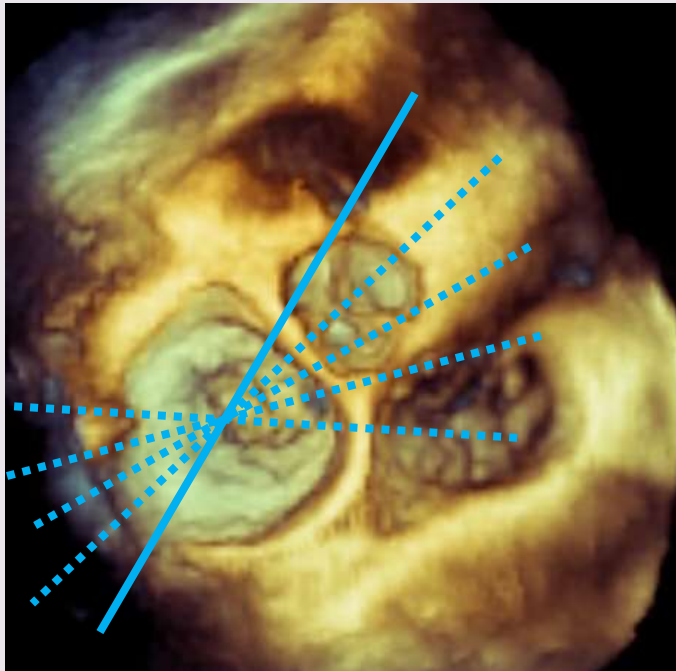
Komorové septum – pohled zezadu



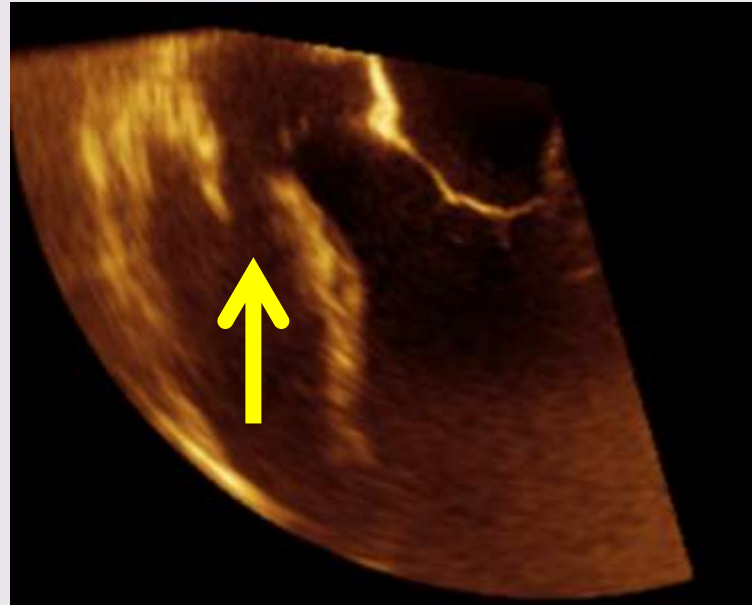
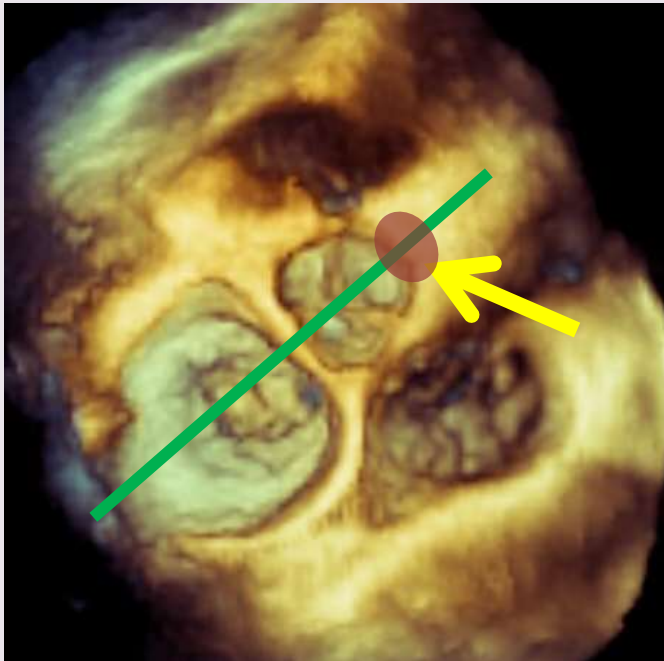
Komorové septum pohled zezadu



Komorové septum – cílené 2D řezy



Subaortální DKS, 3D a 2D cílený řez



Souhrn

3D echo je metodou 1. volby při analýze patologií síňového septa, před a během intervenčních výkonů

3D echo je přínosem při analýze patologií komorového septa (lokalizace a prostorové vztahy)

